



# 2015

---

Ibrahim Index of  
African Governance

---

**How to use  
the Data Portal**

---

## 2015 Ibrahim Index of African Governance (IIAG)

### How to use the 2015 IIAG Data Portal

The IIAG Data Portal is an interactive Excel-based application, available for in-depth analysis of the results in the IIAG, in English or French. The Data Portal gives users complete freedom to view and use the 2015 IIAG data and provides additional country information.

### What can you do with the Data Portal?

The Data Portal presents the 2015 IIAG data and results in any way the user wants. Whether you're a researcher looking for specific country data, a civil servant trying to track progress in your country, or simply an interested individual, the data portal offers information for all parties. Use the Key Findings to get an overview of IIAG results. View the Country Explorer, Group Explorer, and Indicator Explorer to view detailed, specific country or group information. Specify the type of data and for which years you wish to view. Compare countries, scores, ranks, indicators and years. Export your analysis to Excel or PDF.



Welcome

Navigate the Data Portal. Choose to read about the IIAG structure and methodology, or jump to pages for specific country, group, or indicator analysis.

## 2015 IBRAHIM INDEX OF AFRICAN GOVERNANCE (IIAG) DATA PORTAL



The Ibrahim Index of African Governance (IIAG) provides an annual assessment of the quality of governance in African countries. The IIAG consists of 93 indicators from 33 independent external sources and is the most comprehensive collection of data on African governance.

The IIAG provides a framework for citizens, governments, institutions and the private sector to accurately assess the delivery of public goods and services, and policy outcomes, across the continent. As well as being a tool to help determine and debate government performance, the IIAG is a decision-making instrument with which to govern.

This interactive Data Portal will help facilitate your investigations into African governance performance.

[Click here to download "How to Use the Data Portal" \(PDF document\)](#)

#### About

Read the IIAG methodology, view the entire IIAG structure, learn more about the data sources and see a selection of country groups that can be used for IIAG analysis.

#### Key Findings

Identify your own trends and patterns on the 'Scores & Rankings' page. 'Significant Changes' highlights those countries that we can say with statistical certainty have improved or deteriorated, over a specified time period.

#### Country Explorer

Analyse country specific scores, ranks and trends.

#### Group Explorer

Analyse regional, Regional Economic Community and geographical group scores, ranks and trends.

#### Indicator Explorer

Explore individual indicators, including raw data and definitions.

#### Compare

Compare scores between countries and groups.

#### Using this workbook

You must enable macros in order to use this workbook accurately. Multiple pages are available on each of the worksheets. Access the different pages by clicking on the page titles at the top of each worksheet. The diagram below describes the navigation section that appears at the top of every worksheet.

2015 Ibrahim Index of African Governance

INDICATOR EXPLORER OVERVIEW DATA TABLE SOURCE & DEFINITION SEARCH

SELECT CATEGORY: ALL

SELECT INDICATOR: OVERALL SCORE

SELECT COUNTRY / GROUP: Algeria

COMPARISON YEAR: 2010

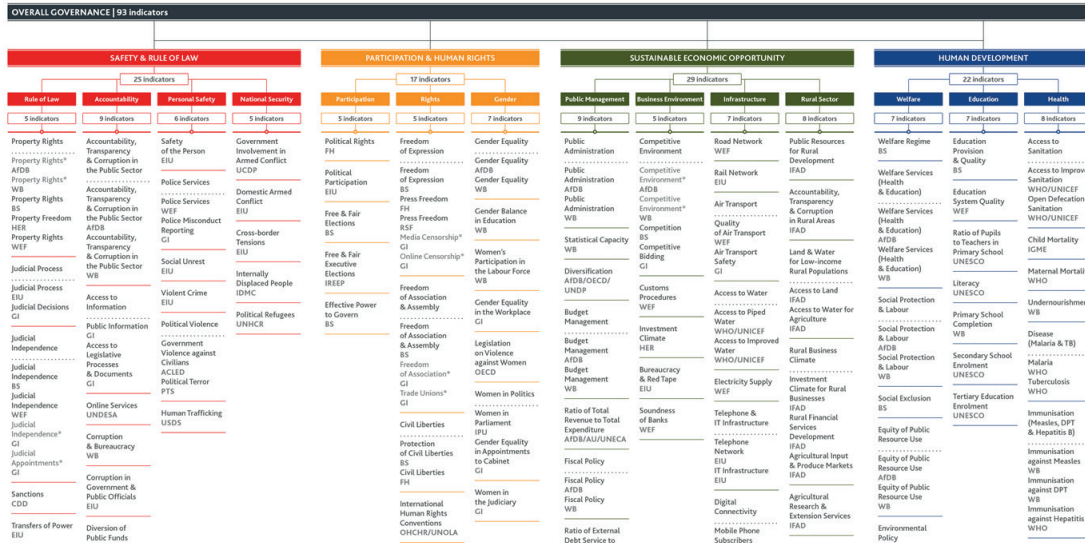
Welcome About\_0 Key Findings\_0 Country Explorer\_0 Group Explorer\_0 Indicator Explorer\_0 Compare\_0

## About

View the entire structure of the IIAG, read the methodology, view the IIAG data sources and data providers, and see the selection of country groups that are used for IIAG analysis.

### 2015 Ibrahim Index of African Governance

[ABOUT](#) | [IIAG FRAMEWORK](#) | [METHODOLOGY](#) | [DATA INSTITUTIONS](#) | [DATA SOURCES](#) | [COUNTRY GROUPS](#) | [FORMER SUDAN](#)



## Key Findings

View the IIAG key findings, country scores, group scores, and change over time. Use the 'Significant Changes' page to highlight those countries that we can say with statistical certainty have improved or deteriorated, over a specified time period.

### 2015 Ibrahim Index of African Governance

[KEY FINDINGS](#) | [SCORES & RANKINGS](#) | [SIGNIFICANT CHANGES](#)

CATEGORY FILTER: Overall Category | 
 GROUP FILTER: Africa | 
 SORT BY: Score | 
 COMPARISON YEAR: 2011 | 
 COUNTRY HIGHLIGHT: <none> | 
 GROUP HIGHLIGHT: <none> | 
 Show confidence interval

#### 2014 scores and ranks

Sorted by 2014 score

Score / 100; 100=best

Δ = change 2011-2014

OVERALL SCORE	SAFETY & RULE OF LAW	PARTICIPATION & HUMAN RIGHTS	SUSTAINABLE ECONOMIC OPPORTUNITY	HUMAN DEVELOPMENT
Rank / 54	Rank / 54	Rank / 54	Rank / 54	Rank / 54
Score / 100	Score / 100	Score / 100	Score / 100	Score / 100
Africa 50.1 +0.2	Africa 51.3 +0.3	Africa 49.3 +0.7	Africa 43.2 +0.7	Africa 56.4 +1.2
1 Mauritius 79.9 -0.7	1 Mauritius 82.7 -1.7	1 Cabo Verde 83.1 -3.5	1 Mauritius 77.5 +0.3	1 Mauritius 85.7 +1.0
2 Cabo Verde 74.5 -1.9	2 Botswana 82.7 -2.4	2 Ghana 76.1 +0.1	2 South Africa 72.3 +2.8	2 Seychelles 82.4 +1.5
3 Botswana 74.2 -1.8	3 Cabo Verde 75.9 -1.1	3 Namibia 76.1 +4.7	3 Morocco 69.8 +11.2	3 Botswana 79.5 +1.7
4 South Africa 73.0 +0.9	4 Namibia 74.3 -0.3	4 South Africa 73.9 -0.2	4 Botswana 66.1 -2.2	4 Cabo Verde 78.6 -1.4
5 Namibia 70.4 +2.0	5 Seychelles 71.1 -1.0	5 Mauritius 73.8 -2.5	5 Seychelles 64.1 +1.6	5 Tunisia 77.8 -2.0
6 Seychelles 70.3 -0.8	6 Ghana 70.6 -1.5	6 Lesotho 70.9 +8.6	6 Namibia 64.0 -0.5	6 South Africa 77.3 +0.3
7 Ghana 67.3 -0.4	7 South Africa 68.4 +0.8	7 Senegal 70.6 +5.4	7 Rwanda 63.5 +2.1	7 Algeria 73.3 +1.4
8 Tunisia 66.9 +2.6	8 Zambia 66.7 +0.1	8 Botswana 68.7 -4.4	8 Tunisia 61.2 -5.2	8 Ghana 71.5 +1.1
9 Senegal 62.4 +4.5	9 Lesotho 66.7 +1.8	9 Benin 68.3 +0.1	9 Cabo Verde 60.6 -1.6	9 Rwanda 71.0 +5.3
10 Lesotho 61.1 +2.2	10 Senegal 66.5 +9.4	10 São Tomé & Príncipe 67.6 -0.8	10 Kenya 54.9 +5.9	10 Namibia 67.1 +4.0
11 Rwanda 60.7 +2.9	11 Malawi 64.0 +1.0	11 Tunisia 61.7 +12.4	11 Egypt 53.4 -4.0	11 São Tomé & Príncipe 66.7 +0.2
12 Zambia 59.5 +0.5	12 Rwanda 62.0 +3.3	12 Tanzania 64.1 -1.6	12 Senegal 51.3 +0.4	12 Morocco 66.3 +0.7
13 São Tomé & Príncipe 59.1 +0.7	13 Tunisia 61.6 +5.1	13 Seychelles 63.7 -5.2	13 Ghana 51.3 -1.5	13 Gambia 65.3 -0.7
14 Kenya 58.8 +4.3	14 São Tomé & Príncipe 61.5 +1.3	14 Kenya 63.3 +10.1	14 Zambia 50.7 +0.7	14 Egypt 65.2 +0.3
15 Benin 58.8 -0.2	15 Benin 61.2 -0.2	15 Malawi 63.0 +0.5	15 Lesotho 50.5 -0.2	15 Libya 63.7 -5.2
16 Morocco 57.6 +3.4	16 Swaziland 59.2 -0.1	16 Sierra Leone 60.8 -0.1	16 Swaziland 50.3 +0.8	16 Kenya 63.0 -0.3
17 Malawi 56.7 -0.2	17 Sierra Leone 58.0 -0.1	17 Mozambique 59.9 +2.3	17 Gambia 50.2 -0.9	17 Zambia 61.5 +4.1
18 Tanzania 56.7 -1.0	18 Morocco 57.8 +0.1	18 Zambia 59.1 -3.0	18 Mali 49.2 +0.5	18 Gabon 61.2 +0.8
19 Uganda 54.6 -1.3	19 Madagascar 57.7 +14.4	19 Uganda 57.2 -3.4	19 Tanzania 49.0 -1.4	19 Senegal 61.1 +2.9
20 Algeria 52.9 +1.4	20 Gabon 57.7 +1.2	20 Niger 56.8 +1.4	20 Burkina Faso 49.0 -2.2	20 Uganda 60.1 +2.9
21 Mozambique 52.3 -2.2	21 Tanzania 56.9 -1.9	21 Liberia 56.2 -2.0	21 Uganda 47.8 -2.4	21 Cameroon 59.8 +2.1
22 Burkina Faso 52.2 +0.3	22 Comoros 56.2 +4.1	22 Burkina Faso 55.9 +1.7	22 Benin 47.7 -2.3	22 Swaziland 59.6 +2.2
23 Gabon 52.2 +1.2	23 Liberia 55.6 +1.3	23 Madagascar 53.0 +4.1	23 Ethiopia 46.9 -3.8	23 Comoros 58.9 +3.3
24 Egypt 51.3 +0.5	24 Togo 55.3 -0.3	24 Comoros 51.3 -4.1	24 Côte d'Ivoire 46.0 +3.5	24 Benin 57.8 +1.6
25 Sierra Leone 51.0 +0.7	25 Burkina Faso 55.2 -1.2	25 Côte d'Ivoire 50.3 +11.3	25 Malawi 45.6 -3.1	25 Burundi 57.7 +5.8



## Country Explorer

Explore specific country information, analyse country specific scores, ranks and trends, view charts, explore the data and indicators in detail. View additional country information to supplement research purposes.

### 2015 Ibrahim Index of African Governance

COUNTRY EXPLORER OVERVIEW CHARTS TRENDS INDICATORS DATA TABLE ADDITIONAL DATA

SELECT COUNTRY / GROUP Zimbabwe COMPARISON YEAR 2001

#### Zimbabwe

Δ = Change since 2001

	2014	Δ	Africa average	Rank / 54
<b>OVERALL SCORE</b>	<b>40.4</b>	<b>+4.1</b>	<b>50.1</b>	<b>44</b>
<b>SAFETY &amp; RULE OF LAW</b>	<b>41.0</b>	<b>+2.0</b>	<b>51.3</b>	<b>43</b>
<b>RULE OF LAW</b>	33.6	+6.2	50.8	46
<b>ACCOUNTABILITY</b>	21.8	-2.1	35.5	43
<b>PERSONAL SAFETY</b>	30.5	-2.4	44.0	46
<b>NATIONAL SECURITY</b>	78.1	+6.5	74.8	31
<b>PARTICIPATION &amp; HUMAN RIGHTS</b>	<b>41.9</b>	<b>+9.7</b>	<b>49.3</b>	<b>34</b>
<b>PARTICIPATION</b>	29.1	+4.4	45.9	37
<b>RIGHTS</b>	31.3	+7.3	47.3	44
<b>GENDER</b>	65.3	+17.2	54.8	15
<b>SUSTAINABLE ECONOMIC OPPORTUNITY</b>	<b>24.6</b>	<b>-2.5</b>	<b>43.2</b>	<b>48</b>
<b>PUBLIC MANAGEMENT</b>	33.6	+4.4	46.0	46
<b>BUSINESS ENVIRONMENT</b>	12.1	-6.1	40.7	51
<b>INFRASTRUCTURE</b>	41.6	+6.0	36.5	16
<b>RURAL SECTOR</b>	11.1	-14.4	50.5	53
<b>HUMAN DEVELOPMENT</b>	<b>54.2</b>	<b>+7.3</b>	<b>56.4</b>	<b>30</b>
<b>WELFARE</b>	36.6	+10.4	50.9	44
<b>EDUCATION</b>	57.4	+2.5	48.8	18
<b>HEALTH</b>	68.5	+8.9	69.9	32

#### Summary

Scores 40.4 (out of 100) in overall governance, ranking 44th (out of 54) in Africa. Shows overall governance improvement (+4.6) since 2011, and improvement in all of the four categories: Safety & Rule of Law (+6.9), Participation & Human Rights (+7.4), Sustainable Economic Opportunity (+0.4) and Human Development (+4.0). Scores lower than the African average (50.1) and lower than the regional average for Southern Africa (58.9). Achieves its highest category score in Human Development (54.2) and its lowest category score in Sustainable Economic Opportunity (24.6). Achieves its highest sub-category score in National Security (78.1) and its lowest sub-category score in Rural Sector (11.1).

Head of State	President Robert Mugabe
Date came to power HoS	31 December 1987
Head of Government	President Robert Mugabe
Date came to power HoG	31 December 1987
Region	Southern Africa
REC Membership(s)	COMESA, SADC
Population (total m)	14.6
Urban population (% of total population)	32.5
Reported on APRM	Not member
African Charter on Statistics	Not signed, Not ratified
African Charter on Democracy, Elections and Governance signatory	Not signed, Not ratified



## Group Explorer

Analyse regional, Regional Economic Community (REC) and geographical group scores.

### 2015 Ibrahim Index of African Governance

GROUP EXPLORER OVERVIEW DATA TABLE INDICATORS TRENDS TIME-SERIES COUNTRY GROUPS

GROUP FILTER North Africa CATEGORY FILTER ALL COMPARISON YEAR 2001

#### North Africa (Average)

Indicator performance, all categories

Indicators sorted by score		2014 Score
HEALTH	Undernourishment	99.5
HEALTH	Disease (Malaria & TB)	96.3
HEALTH	Maternal Mortality	95.8
NATIONAL SECURITY	Political Refugees	95.6
HEALTH	Immunisation (Measles, DPT & Hepatitis B)	94.6
HEALTH	Child Mortality	91.4
EDUCATION	Ratio of Pupils to Teachers in Primary School	85.7
HEALTH	Access to Sanitation	84.9
NATIONAL SECURITY	Internally Displaced People	83.3
RULE OF LAW	Sanctions	83.3
GENDER	Gender Balance in Education	81.9
PUBLIC MANAGEMENT	Ratio of External Debt Service to Exports	81.1
RIGHTS	International Human Rights Conventions	80.8
NATIONAL SECURITY	Government Involvement in Armed Conflict	77.8
EDUCATION	Primary School Completion	77.6
RURAL SECTOR	Engagement with Low-income Rural Populations	74.5
EDUCATION	Literacy	74.4
RURAL SECTOR	Public Resources for Rural Development	73.6
PERSONAL SAFETY	Political Violence	72.7
PUBLIC MANAGEMENT	Fiscal Policy	72.0
INFRASTRUCTURE	Access to Water	72.0
EDUCATION	Secondary School Enrolment	69.4

Most improved		2014 Score	Change since 2001
INFRASTRUCTURE	Digital Connectivity	54.1	+44.9
ACCOUNTABILITY	Online Services	49.6	+28.2
PARTICIPATION	Free & Fair Elections	55.6	+27.8
RIGHTS	International Human Rights Conventions	80.8	+25.0
PUBLIC MANAGEMENT	Ratio of External Debt Service to Exports	81.1	+23.8
PARTICIPATION	Political Participation	58.2	+22.6
EDUCATION	Primary School Completion	77.6	+21.2
GENDER	Women in Politics	34.8	+21.0
RURAL SECTOR	Engagement with Low-income Rural Populations	74.5	+18.5
PARTICIPATION	Effective Power to Govern	33.3	+18.5

Most deteriorated		2014 Score	Change since 2001
NATIONAL SECURITY	Domestic Armed Conflict	37.5	-29.2
PERSONAL SAFETY	Safety of the Person	33.3	-29.2
PERSONAL SAFETY	Human Trafficking	16.7	-29.2
PERSONAL SAFETY	Social Unrest	34.4	-25.0
BUSINESS ENVIRONMENT	Soundness of Banks	27.1	-23.6
BUSINESS ENVIRONMENT	Investment Climate	43.5	-19.4
PUBLIC MANAGEMENT	Ratio of Total Revenue to Total Expenditure	33.9	-19.2



## Indicator Explorer

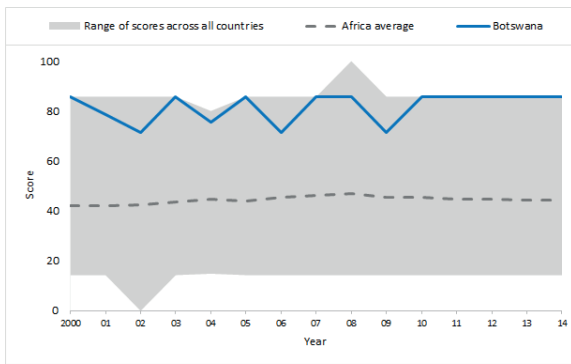
Explore individual indicators, including raw data and definitions. View scores, ranks, and graphs for countries and groups per indicator and compare years and trends over time. Use the 'Search' page to search for indicators on specific governance issues.

2015 Ibrahim Index of African Governance

INDICATOR EXPLORER OVERVIEW DATA TABLE SOURCE & DEFINITION SEARCH

SELECT CATEGORY: ALL | SELECT INDICATOR: Corruption & Bureaucracy (WB) | SELECT COUNTRY / GROUP: Botswana | COMPARISON YEAR: 2001

SAFETY & RULE OF LAW → ACCOUNTABILITY  
**Corruption & Bureaucracy (WB)**



**2014 Score**

Top 5	
Botswana	85.7
Lesotho	85.7
Namibia	85.7
Djibouti	71.4
Ghana	71.4
3 other countries also scored 71.4	

**Bottom 5**

Kenya	14.3
Libya	14.3
Somalia	14.3
Sudan	14.3
Tanzania	14.3
2 other countries also scored 14.3	

**Change since 2001**

Most improved	
Lesotho	+42.9
Rwanda	+42.9
Djibouti	+28.6
Algeria	+21.4
Comoros	+21.4

**Most deteriorated**

Libya	-28.6
Senegal	-14.3
São Tomé & Príncipe	-14.3
Gabon	-14.3
Tanzania	-14.3

This indicator assesses the intrusiveness of bureaucracy and the amount of red tape likely to be encountered, as well as the likelihood of encountering corrupt public officials and other groups.



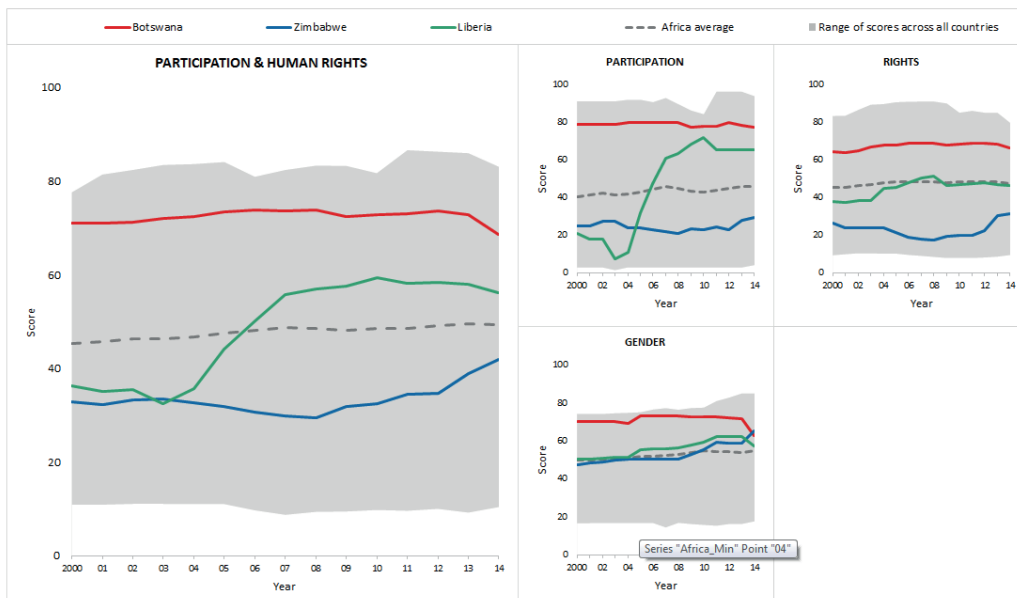
## Compare

Compare scores between countries and groups.

2015 Ibrahim Index of African Governance

COMPARE TRENDS DATA TABLE

SELECT CATEGORY: PARTICIPATION & HUMAN RIGHTS | SELECT COUNTRY / GROUP: Botswana, Zimbabwe, Liberia



[www.moibrahimfoundation.org](http://www.moibrahimfoundation.org)

 /MoIbrahimFoundation  @Mo\_IbrahimFdn #IIAG