



2015

Ibrahim Index of
African Governance

COUNTRY INSIGHTS

CONGO



Contents

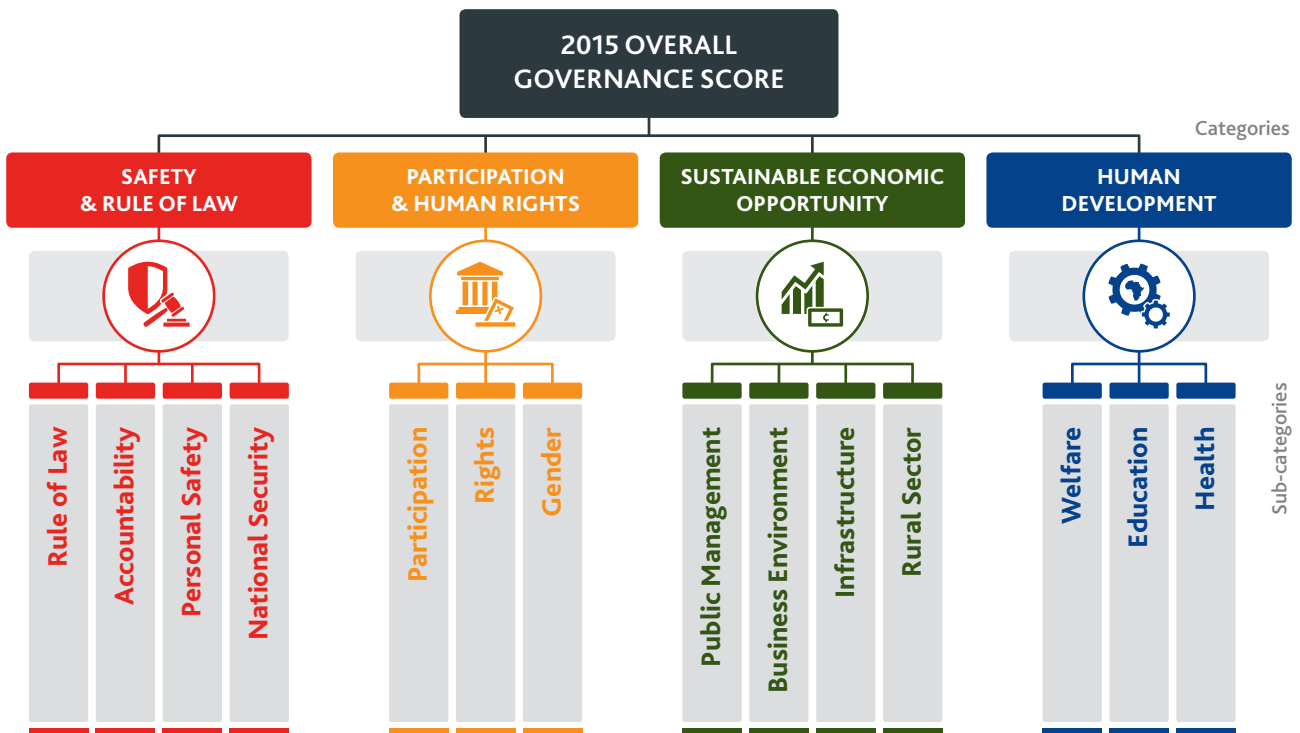
What is the IIAG?	3
How does Congo perform?	4
Data Table	8
Congo within Central Africa	10
Data Providers & IIAG Resources	11

All figures have been rounded to the nearest one decimal place. This means that countries may appear to have the same score, or the change over time may appear inaccurate, but this is not the case when all decimal places are taken into account. Countries have been ranked and trends have been described on the basis of full scores not the rounded numbers that appear here.

Regional Economic Community (REC) averages are calculated by applying the REC's current membership configuration for all data years.

The Mo Ibrahim Foundation (MIF) is aware that some sources update their data sets after our documentation is sent to print. IIAG raw data are correct as per the date 'last accessed', which is stated for each indicator within the Data Portal (www.moibrahimfoundation.org/iiag/downloads/).

South Sudan and Sudan are excluded from all group averages pre-2011 as neither country existed in their current configurations before the secession of South Sudan in 2011.



The Ibrahim Index of African Governance (IIAG) measures the quality of governance in every African country on an annual basis. It does this by compiling data from diverse global sources to build an accurate and detailed picture of governance performance in African countries.

The broad aim of the IIAG is to better inform and sustain the debate on African governance by providing a transparent and user-friendly resource to:

- support citizens, governments, institutions and the private sector to accurately assess the delivery of public goods and services, and policy outcomes.

- encourage data-driven narratives on governance issues.
- help determine, debate and strengthen government performance.

The IIAG was created in 2007 in recognition of the need for a quantifiable tool to accurately measure and monitor African governance performance, its progress over time and across countries, and as a means of supporting effective and responsive solutions to complex public policy challenges in developing countries. Policies need to be evaluated by their results, which can only be done if accompanied by robust data.

2015 Ibrahim Index of African Governance

1 overall governance score is:



CONGO

Congo has shown encouraging gains in overall governance performance, driven by *Participation & Human Rights* and *Sustainable Economic Opportunity*.

Congo registers three top ten improvements at the sub-category level, in *Gender*, *Infrastructure* and *Rural Sector*, but this progress is not enough to push it into the top half of the rankings at the category level.

However, Congo's recent performance in *Human Development*, as a result of the second largest deterioration in *Health* on the continent, may be a cause for concern.

Overall governance: slight improvement overall but diverging category trends.

Congo scores 42.8 (out of 100) in overall governance, ranking 42nd (out of 54) in Africa.

Congo scores lower than the African average and higher than the regional average for Central Africa.

Congo shows overall governance improvement (+0.6) since 2011.

Congo is ranked 4th in Central Africa in overall governance.

Safety & Rule of Law: deterioration in *National Security* reverses gains made elsewhere.

Congo scores 45.8 in *Safety & Rule of Law*, ranking 38th on the continent.

Within the *Safety & Rule of Law* category, Congo's best sub-category performance is in *National Security*, scoring 77.6.

Congo's weakest sub-category performance in the *Safety & Rule of Law* category is in *Accountability*, scoring 18.1.

Congo has shown a deterioration (-0.0, negative change is visible at the second decimal place) in *Safety & Rule of Law* since 2011. This has been driven by deterioration in one of the four sub-categories: *National Security* (-5.0).

Participation & Human Rights: *Gender* drives progress.

Congo scores 38.2 in *Participation & Human Rights*, ranking 36th on the continent.

Within the *Participation & Human Rights* category, Congo's best sub-category performance is in *Gender*, scoring 48.2.

Congo's weakest sub-category performance in the *Participation & Human Rights* category is in *Participation*, scoring 26.0.

Congo has shown an improvement (+2.2) in *Participation & Human Rights* since 2011. This has been driven by improvement in two of the three sub-categories: *Rights* (+1.4) and *Gender* (+5.1).

Sustainable Economic Opportunity: Infrastructure powers improvement in Congo's lowest scoring category.

Congo scores 36.8 in *Sustainable Economic Opportunity*, ranking 39th on the continent.

Within the *Sustainable Economic Opportunity* category, Congo's best sub-category performance is in *Public Management*, scoring 44.6.

Congo's weakest sub-category performance in the *Sustainable Economic Opportunity* category is in *Business Environment*, scoring 22.8.

Congo has shown an improvement (+1.6) in *Sustainable Economic Opportunity* since 2011. This has been driven by improvement in two of the four sub-categories: *Infrastructure* (+10.8) and *Rural Sector* (+1.8).

Human Development: concerning negative trend in Health.

Congo scores 50.4 in *Human Development*, ranking 38th on the continent.

Within the *Human Development* category, Congo's best sub-category performance is in *Health*, scoring 60.2.

Congo's weakest sub-category performance in the *Human Development* category is in *Welfare*, scoring 45.3.

Congo has shown a deterioration (-1.4) in *Human Development* since 2011. This has been driven exclusively by deterioration in *Health* (-6.4).

How does Congo perform?

6

CONGO



OVERALL
GOVERNANCE

2014 SCORES & RANKS

SCORE/100

42.8

AFRICAN AVERAGE

50.1

CHANGE SINCE 2011

+0.6

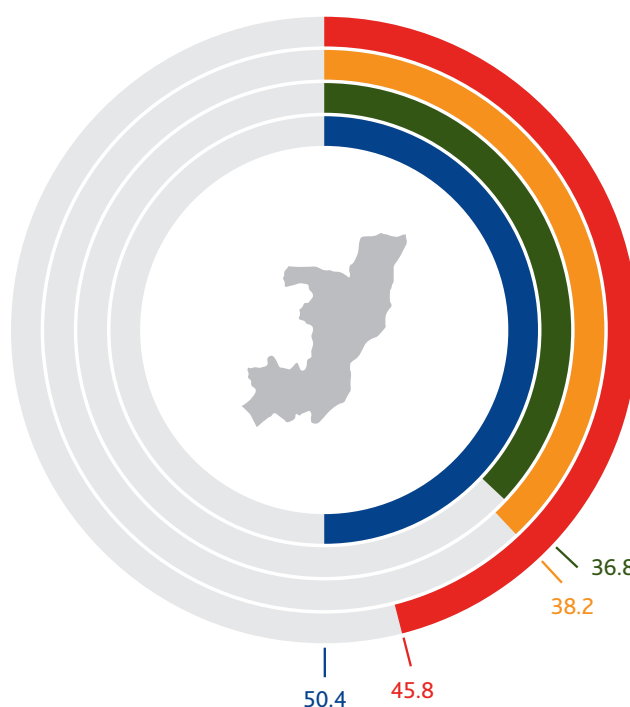
RANK/54

42

Head of State	President Denis Sassou-Nguesso
Date came to power	25 October 1997
Head of Government	President Denis Sassou-Nguesso
Date came to power	25 October 1997
Region	Central Africa
REC Membership(s)	ECCAS
Population (total m)	4.6
Urban population (% of total population)	65.0
African Peer Review Mechanism	Member
African Charter on Democracy, Elections and Governance	Signed, Not ratified
African Charter on Statistics	Signed, Ratified

Information correct at 23 July 2015

- Safety & Rule of Law
- Sustainable Economic Opportunity
- Participation & Human Rights
- Human Development



SAFETY &
RULE OF LAW



PARTICIPATION
& HUMAN RIGHTS



SUSTAINABLE
ECONOMIC
OPPORTUNITY



HUMAN
DEVELOPMENT

SCORE/100

45.8

SCORE/100

38.2

SCORE/100

36.8

SCORE/100

50.4

AFRICAN AVERAGE

51.3

AFRICAN AVERAGE

49.3

AFRICAN AVERAGE

43.2

AFRICAN AVERAGE

56.4

CHANGE SINCE 2011

-0.0

CHANGE SINCE 2011

+2.2

CHANGE SINCE 2011

+1.6

CHANGE SINCE 2011

-1.4

RANK/54

38

RANK/54

36

RANK/54

39

RANK/54

38

Scores and change over time are rounded to one decimal place.

2014 SUB-CATEGORY SCORES & RANKS

SAFETY & RULE OF LAW			
	SCORE/100	AFRICAN AVERAGE	RANK/54
RULE OF LAW	39.1	50.8	40
ACCOUNTABILITY	18.1	35.5	45
PERSONAL SAFETY	48.6	44.0	27
NATIONAL SECURITY	77.6	74.8	32

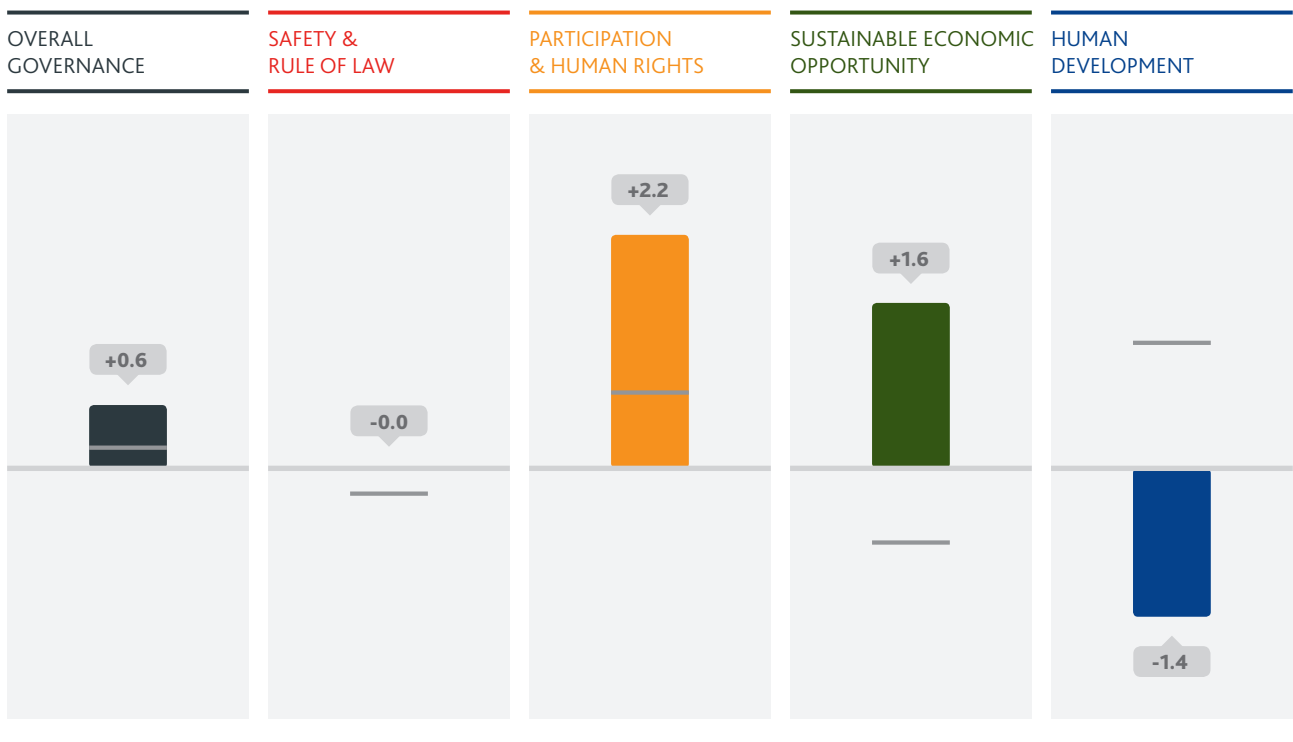
SUSTAINABLE ECONOMIC OPPORTUNITY			
	SCORE/100	AFRICAN AVERAGE	RANK/54
PUBLIC MANAGEMENT	44.6	46.0	34
BUSINESS ENVIRONMENT	22.8	40.7	43
INFRASTRUCTURE	36.6	36.5	26
RURAL SECTOR	43.3	50.5	39

PARTICIPATION & HUMAN RIGHTS			
	SCORE/100	AFRICAN AVERAGE	RANK/54
PARTICIPATION	26.0	45.9	40
RIGHTS	40.4	47.3	35
GENDER	48.2	54.8	39

HUMAN DEVELOPMENT			
	SCORE/100	AFRICAN AVERAGE	RANK/54
WELFARE	45.3	50.9	36
EDUCATION	45.9	48.8	27
HEALTH	60.2	69.9	44

TRENDS SINCE 2011, OVERALL GOVERNANCE & CATEGORY LEVELS

■ 2011-2014 — African average



Data Table

8

CONGO

Score/100; 100 = best

	2000	2001	2002	2003	2004	2005	2006	2007	2008	2009	2010	2011	2012	2013	2014	Change 2011-2014
OVERALL SCORE	35.7	36.9	36.5	37.3	38.1	39.2	39.5	39.4	41.0	41.1	41.7	42.3	42.1	42.6	42.8	+0.6
SAFETY & RULE OF LAW	38.9	39.6	37.2	38.8	39.9	40.8	42.3	43.0	44.9	45.2	45.5	45.9	45.5	46.4	45.8	-0.0
RULE OF LAW	39.1	39.1	39.1	39.1	39.1	36.8	37.8	38.2	38.2	38.2	38.2	37.8	37.9	37.9	39.1	+1.4
Property Rights (AfDB/WB/BS/HER/WEF)	33.2	33.2	33.2	33.2	33.2	21.6	26.5	28.5	28.5	28.5	28.5	26.5	27.0	27.0	27.0	+0.5
Judicial Process (EIU/GI)	50.0	50.0	50.0	50.0	50.0	50.0	50.0	50.0	50.0	50.0	50.0	50.0	50.0	50.0	50.0	0.0
Judicial Independence (BS/GI/WEF)	12.5	12.5	12.5	12.5	12.5	12.5	12.5	12.5	12.5	12.5	12.5	12.5	12.5	12.5	18.8	+6.3
Sanctions (CDD)	100.0	100.0	100.0	100.0	100.0	100.0	100.0	100.0	100.0	100.0	100.0	100.0	100.0	100.0	100.0	0.0
Transfers of Power (EIU)	0.0	0.0	0.0	0.0	0.0	0.0	0.0	0.0	0.0	0.0	0.0	0.0	0.0	0.0	0.0	0.0
ACCOUNTABILITY	15.1	15.1	15.1	15.1	18.2	16.9	15.8	16.2	15.8	15.9	15.9	16.7	15.8	16.3	18.1	+1.4
Accountability, Transparency & Corruption in the Public Sector (AfDB/WB)	46.4	46.4	46.4	46.4	46.4	46.4	40.2	46.4	46.4	46.4	46.4	52.7	45.5	47.6	47.6	-5.1
Access to Information (GI)	0.0	0.0	0.0	0.0	0.0	0.0	0.0	0.0	0.0	0.0	0.0	0.0	0.0	0.0	12.5	+12.5
Online Services (UNDESA)	5.0	5.0	5.0	5.0	21.7	19.4	16.3	13.2	10.1	10.8	11.5	11.4	11.3	13.0	14.8	+3.4
Corruption & Bureaucracy (WB)	28.6	28.6	28.6	28.6	36.6	28.6	28.6	28.6	28.6	28.6	28.6	28.6	28.6	28.6	28.6	0.0
Corruption in Government & Public Officials (EIU)	0.0	0.0	0.0	0.0	0.0	0.0	0.0	0.0	0.0	0.0	0.0	0.0	0.0	0.0	0.0	0.0
Diversion of Public Funds (WEF)
Accountability of Public Officials (EIU)	0.0	0.0	0.0	0.0	0.0	0.0	0.0	0.0	0.0	0.0	0.0	0.0	0.0	0.0	0.0	0.0
Public Sector Corruption Investigation (GI)	12.5	12.5	12.5	12.5	12.5	12.5	12.5	12.5	12.5	12.5	12.5	12.5	12.5	12.5	12.5	0.0
Prosecution of Abuse of Office (BS)	28.6	28.6	28.6	28.6	28.6	28.6	28.6	28.6	28.6	28.6	28.6	28.6	28.6	28.6	28.6	0.0
PERSONAL SAFETY	46.5	48.6	46.3	46.1	49.1	49.7	49.6	41.2	44.3	45.3	46.4	46.5	45.5	48.6	48.6	+2.1
Safety of the Person (EIU)	50.0	50.0	50.0	50.0	50.0	50.0	50.0	0.0	25.0	25.0	25.0	25.0	25.0	25.0	25.0	0.0
Police Services (GI/WEF)	66.7	66.7	66.7	66.7	66.7	66.7	66.7	66.7	66.7	66.7	66.7	66.7	66.7	66.7	66.7	0.0
Social Unrest (EIU)	50.0	50.0	50.0	50.0	50.0	50.0	50.0	50.0	50.0	50.0	50.0	50.0	50.0	50.0	50.0	0.0
Violent Crime (EIU)	25.0	25.0	25.0	25.0	25.0	25.0	25.0	25.0	25.0	25.0	25.0	25.0	25.0	25.0	25.0	0.0
Political Violence (ACLEDD/PTS)	62.5	75.0	61.3	60.2	77.8	81.3	81.0	80.7	74.1	80.1	86.7	87.1	81.3	75.0	75.0	-12.1
Human Trafficking (USDS)	25.0	25.0	25.0	25.0	25.0	25.0	25.0	25.0	25.0	25.0	25.0	25.0	25.0	50.0	50.0	+25.0
NATIONAL SECURITY	54.6	55.3	48.1	54.7	53.3	59.7	66.0	76.3	81.4	81.4	81.5	82.6	82.7	82.8	77.6	-5.0
Government Involvement in Armed Conflict (UCDP)	100.0	100.0	66.7	100.0	100.0	100.0	100.0	100.0	100.0	100.0	100.0	100.0	100.0	100.0	100.0	0.0
Domestic Armed Conflict (EIU)	0.0	0.0	0.0	0.0	0.0	0.0	0.0	25.0	50.0	50.0	50.0	50.0	50.0	50.0	50.0	0.0
Cross-border Tensions (EIU)	50.0	50.0	50.0	50.0	50.0	50.0	50.0	75.0	75.0	75.0	75.0	75.0	75.0	75.0	50.0	-25.0
Internally Displaced People (IDMC)	47.0	47.0	47.0	47.0	38.5	67.0	95.5	95.6	95.7	95.9	96.0	96.1	96.2	96.3	96.4	+0.3
Political Refugees (UNHCR)	76.1	79.5	76.9	76.7	77.9	81.3	84.7	85.8	86.1	86.4	86.4	91.8	92.4	92.8	91.4	-0.3
PARTICIPATION & HUMAN RIGHTS	29.6	31.1	31.9	33.2	33.7	33.6	32.2	32.8	33.6	35.0	35.7	36.1	36.1	36.1	38.2	+2.2
PARTICIPATION	15.7	19.0	20.7	24.0	24.0	24.0	20.7	22.1	23.5	26.0	26.0	26.0	26.0	26.0	26.0	0.0
Political Rights (FH)	16.7	33.3	16.7	33.3	33.3	33.3	16.7	16.7	16.7	16.7	16.7	16.7	16.7	16.7	16.7	0.0
Political Participation (EIU)	28.5	28.5	28.5	28.5	28.5	28.5	28.5	35.6	42.7	42.7	42.7	42.7	42.7	42.7	42.7	0.0
Free & Fair Elections (BS)	22.2	22.2	22.2	22.2	22.2	22.2	22.2	22.2	22.2	22.2	22.2	22.2	22.2	22.2	22.2	0.0
Free & Fair Executive Elections (IREEP)	0.0	0.0	25.0	25.0	25.0	25.0	25.0	25.0	25.0	37.5	37.5	37.5	37.5	37.5	37.5	0.0
Effective Power to Govern (BS)	11.1	11.1	11.1	11.1	11.1	11.1	11.1	11.1	11.1	11.1	11.1	11.1	11.1	11.1	11.1	0.0
RIGHTS	35.2	36.3	37.2	38.3	38.4	37.8	36.8	36.8	37.4	38.0	39.0	39.0	38.9	38.8	40.4	+1.4
Freedom of Expression (BS/FH/GI/RSF)	48.0	53.7	53.0	53.4	54.3	54.3	54.3	54.3	52.3	50.6	50.6	50.3	49.9	49.2	53.6	+3.3
Freedom of Association & Assembly (BS/GI)	35.4	35.4	35.4	35.4	35.4	35.4	35.4	35.4	35.4	35.4	35.4	35.4	35.4	35.4	29.2	-6.3
Civil Liberties (BS/FH)	37.5	37.5	37.5	37.5	37.5	29.2	29.2	29.2	29.2	29.2	29.2	29.2	29.2	29.2	29.2	0.0
International Human Rights Conventions (OHCHR/UNOLA)	30.0	30.0	35.0	40.0	40.0	45.0	40.0	40.0	45.0	50.0	55.0	55.0	55.0	55.0	65.0	+10.0
Human Rights (EIU)	25.0	25.0	25.0	25.0	25.0	25.0	25.0	25.0	25.0	25.0	25.0	25.0	25.0	25.0	25.0	0.0
GENDER	38.0	38.1	37.9	37.2	38.6	38.9	39.3	39.5	39.8	40.9	42.0	43.1	43.4	43.5	48.2	+5.1
Gender Equality (AfDB/WB)	37.5	37.5	37.5	37.5	37.5	37.5	37.5	37.5	37.5	37.5	37.5	37.5	37.5	37.5	37.5	0.0
Gender Balance in Education (WB)	62.1	62.1	62.1	57.6	66.5	68.6	70.7	72.8	74.8	76.9	79.0	81.1	83.2	83.2	83.2	+2.1
Women's Participation in the Labour Force (WB)	69.2	69.8	70.5	71.1	71.8	72.3	72.6	72.8	73.1	73.2	73.3	73.5	73.5	73.6	73.6	+0.1
Gender Equality in the Workplace (GI)	0.0	0.0	0.0	0.0	0.0	0.0	0.0	0.0	0.0	0.0	0.0	0.0	0.0	0.0	33.3	+33.3
Legislation on Violence against Women (OECD)	25.0	25.0	25.0	25.0	25.0	25.0	25.0	25.0	25.0	30.6	36.1	41.7	41.7	41.7	41.7	0.0
Women in Politics (GI/IPU)	21.9	21.9	20.5	19.2	19.2	19.2	19.2	18.2	18.2	18.2	18.2	18.2	18.3	18.3	18.3	+0.1
Women in the Judiciary (GI)	50.0	50.0	50.0	50.0	50.0	50.0	50.0	50.0	50.0	50.0	50.0	50.0	50.0	50.0	50.0	0.0
SUSTAINABLE ECONOMIC OPPORTUNITY	30.1	29.8	28.8	29.4	29.8	33.5	33.4	31.7	34.4	33.4	35.2	35.2	34.5	35.4	36.8	+1.6
PUBLIC MANAGEMENT	38.9	37.7	33.7	35.9	37.5	45.1	44.6	42.3	44.4	44.2	47.9	48.8	45.8	45.9	44.6	-4.3
Public Administration (AfDB/WB)	50.0	50.0	50.0	50.0	50.0	50.0	50.0	56.3	56.3	56.3	56.3	56.3	56.3	59.4	54.7	-1.6
Statistical Capacity (WB)	34.3	34.3	34.3	34.3	34.3	37.3	46.3	47.8	43.3	50.7	50.7	44.8	44.8	47.8	41.8	-3.0

Score/100; 100 = best

	2000	2001	2002	2003	2004	2005	2006	2007	2008	2009	2010	2011	2012	2013	2014	Change 2011-2014	
Diversification (AfDB/OECD/UNDP)	0.6	0.6	0.6	0.7	0.6	0.5	0.4	0.6	0.4	0.3	0.4	0.4	0.3	0.5	0.5	+0.1	
Budget Management (AfDB/WB)	52.8	52.8	52.8	52.8	52.8	47.2	47.2	33.3	38.9	44.4	44.4	44.4	47.2	41.7	47.2	+2.8	
Ratio of Total Revenue to Total Expenditure (AfDB/AU/UNECA)	61.5	54.9	35.6	58.5	70.2	100.0	100.0	90.2	100.0	75.6	100.0	100.0	74.2	78.4	45.6	-54.4	
Fiscal Policy (AfDB/WB)	56.3	56.3	56.3	56.3	56.3	50.8	38.1	31.0	43.7	50.8	56.3	69.0	63.5	63.5	63.5	-5.6	
Ratio of External Debt Service to Exports (EIU)	66.3	59.2	43.2	39.2	42.8	93.9	93.1	95.3	91.5	92.4	95.5	97.2	96.0	91.5	91.5	-5.7	
Revenue Mobilisation (AfDB/WB/ICTD)	28.7	31.3	30.5	31.0	30.5	26.3	26.2	26.6	26.0	27.7	27.3	27.5	29.7	30.4	31.1	+3.6	
Access to Financial Records of State-owned Companies (GI)	0.0	0.0	0.0	0.0	0.0	0.0	0.0	0.0	0.0	0.0	0.0	0.0	0.0	0.0	25.0	+25.0	
BUSINESS ENVIRONMENT	29.1	29.1	29.1	29.1	29.1	29.1	29.1	29.1	29.1	22.8	24.7	24.7	24.7	24.7	22.8	-1.9	
Competitive Environment (AfDB/WB/BS/GI)	53.9	53.9	53.9	53.9	53.9	53.9	53.9	53.9	53.9	51.8	51.8	51.8	51.8	51.8	35.1	-16.7	
Customs Procedures (WEF)	
Investment Climate (HER)	33.3	33.3	33.3	33.3	33.3	33.3	33.3	33.3	33.3	16.7	22.2	22.2	22.2	22.2	33.3	+11.1	
Bureaucracy & Red Tape (EIU)	0.0	0.0	0.0	0.0	0.0	0.0	0.0	0.0	0.0	0.0	0.0	0.0	0.0	0.0	0.0	0.0	
Soundness of Banks (WEF)	
INFRASTRUCTURE	22.1	22.3	22.4	22.6	22.7	22.9	23.2	18.6	24.1	25.1	25.7	25.8	26.1	26.4	36.6	+10.8	
Road Network (WEF)	
Rail Network (EIU)	25.0	25.0	25.0	25.0	25.0	25.0	25.0	0.0	25.0	25.0	25.0	25.0	25.0	25.0	25.0	0.0	
Air Transport (GI/WEF)	25.0	25.0	25.0	25.0	25.0	25.0	25.0	25.0	25.0	25.0	25.0	25.0	25.0	25.0	50.0	+25.0	
Access to Water (WHO/UNICEF)	43.0	43.3	43.6	43.8	44.1	44.3	44.6	44.8	45.1	45.3	45.5	45.7	46.0	46.2	46.4	+0.7	
Electricity Supply (WEF)	
Telephone & IT Infrastructure (EIU)	16.7	16.7	16.7	16.7	16.7	16.7	16.7	16.7	16.7	16.7	16.7	16.7	16.7	16.7	41.7	+25.0	
Digital Connectivity (ITU)	1.0	1.4	1.8	2.4	2.7	3.4	4.9	6.3	8.6	13.3	16.3	16.8	18.0	19.1	19.8	+3.0	
RURAL SECTOR	30.1	30.1	30.1	30.1	30.1	36.8	36.8	36.8	40.0	41.5	42.7	41.5	41.5	44.7	43.3	+1.8	
Public Resources for Rural Development (IFAD)	12.5	12.5	12.5	12.5	12.5	40.5	40.5	40.5	30.8	30.8	37.5	37.5	37.5	37.5	37.5	0.0	
Accountability, Transparency & Corruption in Rural Areas (IFAD)	24.2	24.2	24.2	24.2	24.2	44.3	44.3	44.3	28.6	28.6	42.4	42.4	42.4	42.4	33.4	-9.0	
Land & Water for Low-income Rural Populations (IFAD)	61.2	61.2	61.2	61.2	61.2	37.4	37.4	37.4	50.1	44.9	42.7	42.7	42.7	47.3	46.5	+3.8	
Rural Business Climate (IFAD)	27.7	27.7	27.7	27.7	27.7	55.2	55.2	55.2	37.8	38.7	41.8	41.8	41.8	46.1	46.1	+4.3	
Agricultural Research & Extension Services (IFAD)	9.2	9.2	9.2	9.2	9.2	15.4	15.4	15.4	41.9	51.1	37.2	37.2	37.2	41.9	41.9	+4.7	
Agricultural Policy Costs (WEF)	
Engagement with Low-income Rural Populations (IFAD)	38.2	38.2	38.2	38.2	38.2	34.8	34.8	34.8	41.2	54.5	55.9	55.9	55.9	55.9	55.9	0.0	
Equal Representation in Rural Areas (IFAD)	37.5	37.5	37.5	37.5	37.5	30.0	30.0	30.0	50.0	41.8	41.8	33.3	33.3	41.8	41.8	+8.5	
HUMAN DEVELOPMENT	44.1	47.1	48.0	47.9	49.1	49.0	50.0	50.3	51.2	50.8	50.3	51.9	52.3	52.6	50.4	-1.4	
WELFARE	40.0	40.0	40.0	40.0	40.0	39.2	37.2	38.9	38.9	39.7	41.2	43.5	44.4	44.7	45.3	+1.8	
Welfare Regime (BS)	30.8	30.8	30.8	30.8	30.8	30.8	30.8	30.8	30.8	30.8	26.9	23.1	23.1	23.1	23.1	0.0	
Welfare Services (Health & Education) (AfDB/WB)	47.3	47.3	47.3	47.3	47.3	53.6	53.6	59.8	59.8	59.8	67.0	67.0	62.8	62.8	64.9	-2.1	
Social Protection & Labour (AfDB/WB)	43.7	43.7	43.7	43.7	43.7	38.1	43.7	43.7	43.7	49.2	49.2	49.2	47.0	47.0	47.0	-2.2	
Social Exclusion (BS)	28.6	28.6	28.6	28.6	28.6	28.6	28.6	28.6	28.6	28.6	28.6	28.6	28.6	28.6	28.6	0.0	
Equity of Public Resource Use (AfDB/WB)	53.6	53.6	53.6	53.6	53.6	47.3	46.4	46.4	46.4	46.4	46.4	46.4	53.6	55.7	57.7	+11.3	
Environmental Policy (BS)	28.6	28.6	28.6	28.6	28.6	28.6	28.6	28.6	28.6	28.6	35.7	42.9	42.9	42.9	42.9	0.0	
Environmental Sustainability (AfDB/WB)	47.2	47.2	47.2	47.2	47.2	47.2	29.2	34.7	34.7	34.7	34.7	47.2	52.8	52.8	52.8	+5.6	
EDUCATION	36.8	36.8	37.7	35.7	37.4	38.6	42.5	41.8	42.5	40.2	43.6	45.5	46.1	45.9	45.9	+0.3	
Education Provision & Quality (BS)	16.7	16.7	16.7	16.7	16.7	16.7	16.7	16.7	16.7	16.7	16.7	16.7	16.7	16.7	16.7	0.0	
Education System Quality (WEF)	
Ratio of Pupils to Teachers in Primary School (UNESCO)	45.3	46.4	50.2	40.0	19.9	35.8	51.8	47.6	55.2	40.9	58.2	60.5	63.6	63.6	63.6	+3.0	
Literacy (UNESCO)	80.3	80.3	80.3	80.3	80.3	80.3	80.3	80.3	80.3	80.3	80.3	80.3	80.3	80.3	80.3	0.0	
Primary School Completion (WB)	39.6	39.6	42.5	39.3	63.5	53.4	59.2	57.3	52.1	51.1	51.0	57.5	54.5	54.5	54.5	-3.0	
Secondary School Enrolment (UNESCO)	30.8	30.8	30.8	32.1	37.1	38.1	39.0	40.0	40.9	41.8	42.8	43.7	44.7	44.7	44.7	+0.9	
Tertiary Education Enrolment (UNESCO)	8.2	6.8	6.0	6.0	6.7	7.4	8.1	8.9	9.6	10.3	12.4	14.5	16.7	15.4	15.4	+0.9	
HEALTH	55.5	64.6	66.2	68.2	70.1	69.3	70.1	70.3	72.1	72.6	66.2	66.6	66.3	67.4	60.2	-6.4	
Access to Sanitation (WHO/UNICEF)	48.3	48.4	48.5	48.6	48.7	48.8	48.9	49.0	49.1	49.2	49.4	49.5	49.6	49.6	49.7	+0.2	
Child Mortality (IGME)	50.7	51.6	53.4	56.1	59.3	62.9	66.5	69.9	73.3	76.3	78.9	80.9	82.6	83.9	83.9	+3.0	
Maternal Mortality (WHO)	72.8	73.5	74.2	75.0	75.7	76.4	77.2	77.9	78.6	79.4	80.1	80.7	81.3	81.9	81.9	+1.2	
Undernourishment (WB)	44.4	51.4	56.5	59.4	57.7	54.5	49.3	47.5	46.8	47.5	48.6	50.0	51.8	52.3	52.3	+2.3	
Disease (Malaria & TB) (WHO)	90.3	89.5	89.0	87.9	87.4	86.6	86.4	86.4	86.0	86.4	80.8	75.2	79.4	79.7	79.7	+4.4	
Immunisation (Measles, DPT & Hepatitis B) (WB/WHO)	37.9	37.6	41.9	50.2	62.1	56.0	62.6	61.5	71.3	69.3	72.3	72.3	64.7	64.7	64.7	-7.6	
Antiretroviral Treatment (ART) Provision (UNAIDS)	0.0	19.9	23.8	21.3	26.7	19.3	-4.6
Public Health Campaigns (GI)	100.0	100.0	100.0	100.0	100.0	100.0	100.0	100.0	100.0	100.0	100.0	100.0	100.0	100.0	50.0	-50.0	

CENTRAL AFRICA



OVERALL GOVERNANCE

40.9

2014 SCORE/100
2014 RANK/8; 1=BEST



SAFETY & RULE OF LAW

41.2



PARTICIPATION
& HUMAN RIGHTS

38.9



SUSTAINABLE ECONOMIC
OPPORTUNITY

33.6



HUMAN DEVELOPMENT

49.7

CAMEROON

	45.9	3
	44.2	4
	37.9	4
	41.6	1
	59.8	3

CAR

	24.9	8
	14.3	8
	34.1	5
	22.0	8
	29.0	8

CHAD

	32.8	7
	38.7	6
	30.6	7
	27.9	6
	34.1	7

CONGO

	42.8	4
	45.8	3
	38.2	3
	36.8	4
	50.4	5

DRC

	33.9	6
	28.3	7
	32.4	6
	31.4	5
	43.4	6

EQUATORIAL GUINEA

	35.5	5
	39.3	5
	22.0	8
	27.6	7
	53.1	4

GABON

	52.2	2
	57.7	2
	48.6	2
	41.2	2
	61.2	2

SÃO TOMÉ & PRÍNCIPE

	59.1	1
	61.5	1
	67.6	1
	40.4	3
	66.7	1

The 2015 IIAG was calculated using data from 33 independent institutions.

African Development Bank (AfDB)
 African Union Commission (AUC)
 Armed Conflict Location & Event Data Project (ACLED)
 Bertelsmann Stiftung (BS)
 Economist Intelligence Unit (EIU)
 Freedom House (FH)
 Ghana Center for Democratic Development (CDD-Ghana)
 Global Integrity (GI)
 Institut de Recherche Empirique en Economie Politique (IREEP)
 Inter-agency Group for Child Mortality Estimation (IGME)
 Internal Displacement Monitoring Centre (IDMC)
 International Centre for Tax and Development (ICTD)
 International Fund for Agricultural Development (IFAD)
 International Telecommunication Union (ITU)
 Inter-Parliamentary Union (IPU)
 Joint United Nations Programme on HIV/AIDS (UNAIDS)
 Office of the High Commissioner for Human Rights (OHCHR)
 Office of the United Nations High Commissioner for Refugees (UNHCR)
 Organisation for Economic Co-operation and Development (OECD)
 Political Terror Scale (PTS)
 Reporters sans frontières (RSF)
 The Heritage Foundation (HER)
 United Nations Children's Fund (UNICEF)
 United Nations Department of Economic and Social Affairs (UNDESA)
 United Nations Development Programme (UNDP)
 United Nations Economic Commission for Africa (UNECA)
 United Nations Educational, Scientific and Cultural Organization (UNESCO)
 United Nations Office of Legal Affairs (UNOLA)
 United States Department of State - Office to Monitor and Combat Trafficking in Persons (USDS)
 Uppsala University, Department of Peace and Conflict Research - Uppsala Conflict Data Programme (UCDP)
 World Bank (WB)
 World Economic Forum (WEF)
 World Health Organization (WHO)

To explore the 2015 IIAG further, including information on the IIAG methodology and data sources, download the IIAG Data Portal, Executive Summary or Sub-category Insights from www.moibrahimfoundation.org/iiag/downloads/.



The IIAG Data Portal is an interactive Excel-based application, available for in-depth analysis of the results of the IIAG, in English or French.

- > EXPLORE KEY FINDINGS
- > EXPLORE BY COUNTRY
- > EXPLORE BY REGION, REC OR GEOGRAPHICAL GROUPING
- > EXPLORE BY INDICATOR
- > COMPARE COUNTRIES OR GROUPS



Join the discussion on Twitter or Facebook:

[@Mo_IbrahimFdn](https://twitter.com/Mo_IbrahimFdn) #IIAG [f /MoIbrahimFoundation](https://www.facebook.com/MoIbrahimFoundation)

www.moibrahimfoundation.org

 /MoIbrahimFoundation  @Mo_IbrahimFdn #IIAG