



2015

Ibrahim Index of
African Governance

COUNTRY INSIGHTS

DJIBOUTI



Contents

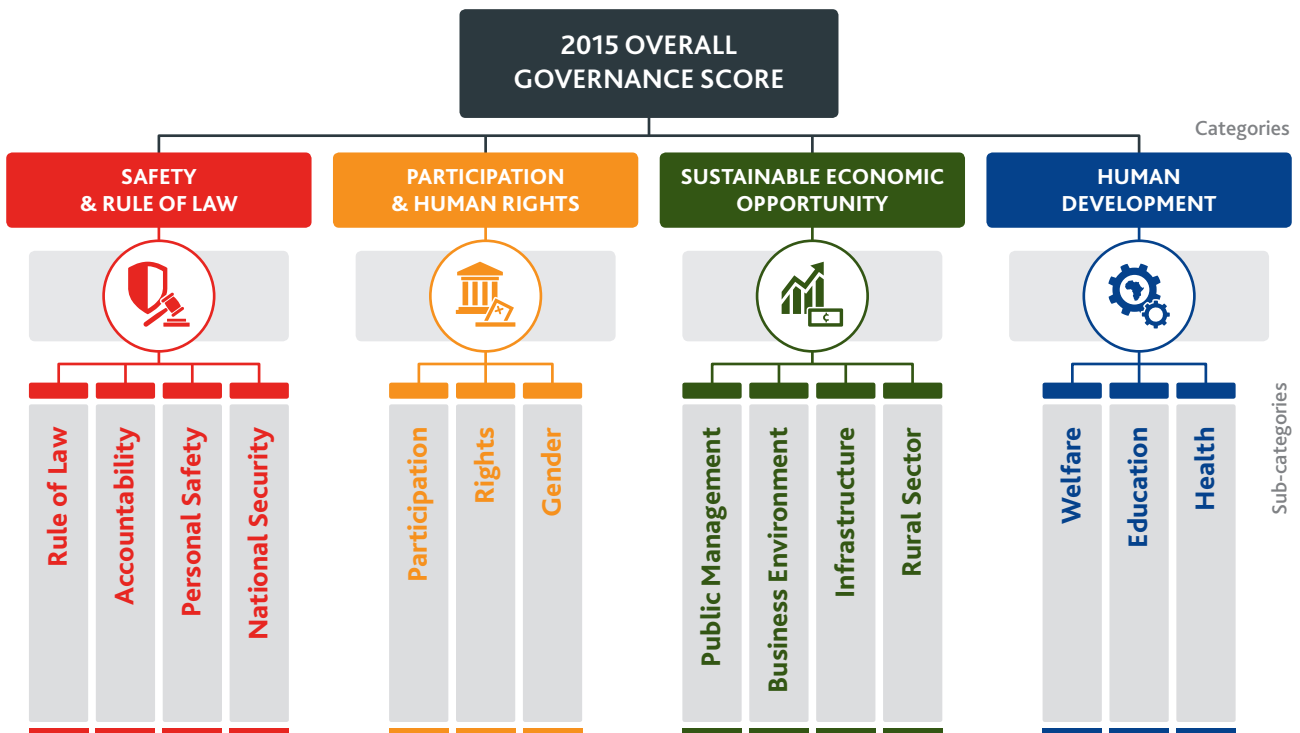
What is the IIAG?	3
How does Djibouti perform?	4
Data Table	8
Djibouti within East Africa	10
Data Providers & IIAG Resources	11

All figures have been rounded to the nearest one decimal place. This means that countries may appear to have the same score, or the change over time may appear inaccurate, but this is not the case when all decimal places are taken into account. Countries have been ranked and trends have been described on the basis of full scores not the rounded numbers that appear here.

Regional Economic Community (REC) averages are calculated by applying the REC's current membership configuration for all data years.

The Mo Ibrahim Foundation (MIF) is aware that some sources update their data sets after our documentation is sent to print. IIAG raw data are correct as per the date 'last accessed', which is stated for each indicator within the Data Portal (www.moibrahimfoundation.org/iiag/downloads/).

South Sudan and Sudan are excluded from all group averages pre-2011 as neither country existed in their current configurations before the secession of South Sudan in 2011.



The Ibrahim Index of African Governance (IIAG) measures the quality of governance in every African country on an annual basis. It does this by compiling data from diverse global sources to build an accurate and detailed picture of governance performance in African countries.

The broad aim of the IIAG is to better inform and sustain the debate on African governance by providing a transparent and user-friendly resource to:

- support citizens, governments, institutions and the private sector to accurately assess the delivery of public goods and services, and policy outcomes.

- encourage data-driven narratives on governance issues.
- help determine, debate and strengthen government performance.

The IIAG was created in 2007 in recognition of the need for a quantifiable tool to accurately measure and monitor African governance performance, its progress over time and across countries, and as a means of supporting effective and responsive solutions to complex public policy challenges in developing countries. Policies need to be evaluated by their results, which can only be done if accompanied by robust data.

2015 Ibrahim Index of African Governance

1 overall governance score is:



DJIBOUTI

Djibouti's slight improvement in overall governance is a result of diverging trends at the category level; *Safety & Rule of Law* and *Sustainable Economic Opportunity* register modest improvements while *Participation & Human Rights* and *Human Development* demonstrate weakening scores.

Djibouti is one of the top ten improvers at the continental level in *Rule of Law*, *Rural Sector* and *Education*; however progress in the latter sub-category has not been sufficient to balance negative trends in the *Welfare* and *Health* sub-categories of *Human Development*.

Deterioration in *Rights*, resulting from declines in all but one of the underlying indicators, is notable.

Overall governance: modest improvement in a mid-ranking country.

Djibouti scores 45.9 (out of 100) in overall governance, ranking 36th (out of 54) in Africa.

Djibouti scores lower than the African average and higher than the regional average for East Africa.

Djibouti shows overall governance improvement (+0.5) since 2011.

Djibouti is ranked 8th in East Africa in overall governance.

***Safety & Rule of Law*: marked progress in *Rule of Law* balances out negative trend in *National Security*.**

Djibouti scores 52.4 in *Safety & Rule of Law*, ranking 30th on the continent.

Within the *Safety & Rule of Law* category, Djibouti's best sub-category performance is in *National Security*, scoring 81.1.

Djibouti's weakest sub-category performance in the *Safety & Rule of Law* category is in *Accountability*, scoring 28.7.

Djibouti has shown an improvement (+1.5) in *Safety & Rule of Law* since 2011. This has been driven by improvement in one of the four sub-categories: *Rule of Law* (+6.9).

***Participation & Human Rights*: faltering performance driven by deterioration in *Rights*.**

Djibouti scores 35.7 in *Participation & Human Rights*, ranking 44th on the continent.

Within the *Participation & Human Rights* category, Djibouti's best sub-category performance is in *Gender*, scoring 54.6.

Djibouti's weakest sub-category performance in the *Participation & Human Rights* category is in *Participation*, scoring 24.0.

Djibouti has shown a deterioration (-0.8) in *Participation & Human Rights* since 2011. This has been driven by deterioration in two of the three sub-categories: *Rights* (-5.9) and *Gender* (-1.2).

Sustainable Economic Opportunity: diverging trends at the sub-category level.

Djibouti scores 42.3 in *Sustainable Economic Opportunity*, ranking 28th on the continent.

Within the *Sustainable Economic Opportunity* category, Djibouti's best sub-category performance is in *Rural Sector*, scoring 46.8.

Djibouti's weakest sub-category performance in the *Sustainable Economic Opportunity* category is in *Business Environment*, scoring 39.8.

Djibouti has shown an improvement (+1.4) in *Sustainable Economic Opportunity* since 2011. This has been driven by improvement in two of the four sub-categories: *Infrastructure* (+4.6) and *Rural Sector* (+2.7).

Human Development: slight deterioration masks encouraging progress in Education.

Djibouti scores 53.3 in *Human Development*, ranking 31st on the continent.

Within the *Human Development* category, Djibouti's best sub-category performance is in *Health*, scoring 65.5.

Djibouti's weakest sub-category performance in the *Human Development* category is in *Education*, scoring 41.4.

Djibouti has shown a deterioration (-0.2) in *Human Development* since 2011. This has been driven by deterioration in two of the three sub-categories: *Welfare* (-1.9) and *Health* (-2.9).

How does Djibouti perform?

6

DJIBOUTI



OVERALL
GOVERNANCE

2014 SCORES & RANKS

SCORE/100

45.9

AFRICAN AVERAGE

50.1

CHANGE SINCE 2011

+0.5

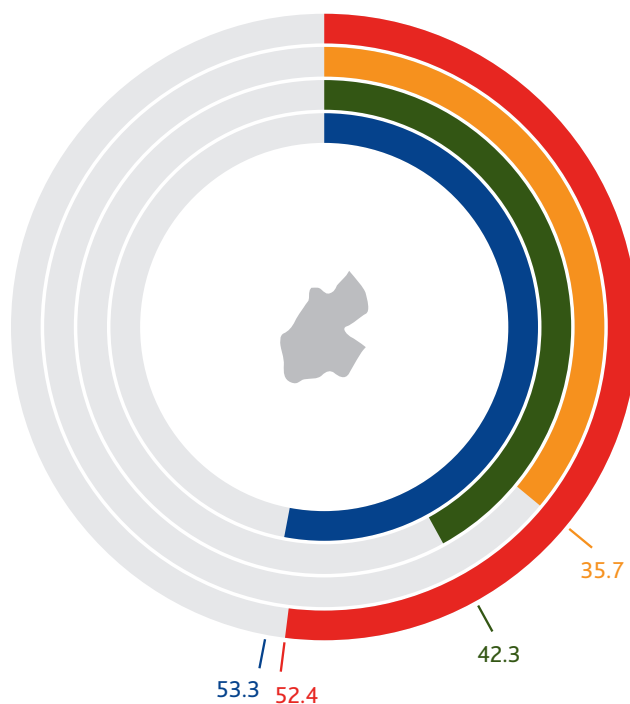
RANK/54

36

Head of State	President Ismail Omar Guelleh
Date came to power	8 May 1999
Head of Government	Prime Minister Abdoukader Kamil Mohamed
Date came to power	1 April 2013
Region	East Africa
REC Membership(s)	CEN-SAD, COMESA, IGAD
Population (total m)	0.9
Urban population (% of total population)	77.3
African Peer Review Mechanism	Member
African Charter on Democracy, Elections and Governance	Signed, Not ratified
African Charter on Statistics	Not signed, Not ratified

Information correct at 23 July 2015

- Safety & Rule of Law
- Sustainable Economic Opportunity
- Participation & Human Rights
- Human Development



SAFETY &
RULE OF LAW



PARTICIPATION
& HUMAN RIGHTS



SUSTAINABLE
ECONOMIC
OPPORTUNITY



HUMAN
DEVELOPMENT

SCORE/100

52.4

SCORE/100

35.7

SCORE/100

42.3

SCORE/100

53.3

AFRICAN AVERAGE

51.3

AFRICAN AVERAGE

49.3

AFRICAN AVERAGE

43.2

AFRICAN AVERAGE

56.4

CHANGE SINCE 2011

+1.5

CHANGE SINCE 2011

-0.8

CHANGE SINCE 2011

+1.4

CHANGE SINCE 2011

-0.2

RANK/54

30

RANK/54

44

RANK/54

28

RANK/54

31

2014 SUB-CATEGORY SCORES & RANKS

SAFETY & RULE OF LAW			
	SCORE/100	AFRICAN AVERAGE	RANK/54
RULE OF LAW	49.7	50.8	30
ACCOUNTABILITY	28.7	35.5	37
PERSONAL SAFETY	49.9	44.0	23
NATIONAL SECURITY	81.1	74.8	27

SUSTAINABLE ECONOMIC OPPORTUNITY			
	SCORE/100	AFRICAN AVERAGE	RANK/54
PUBLIC MANAGEMENT	42.7	46.0	40
BUSINESS ENVIRONMENT	39.8	40.7	29
INFRASTRUCTURE	39.9	36.5	19
RURAL SECTOR	46.8	50.5	33

PARTICIPATION & HUMAN RIGHTS			
	SCORE/100	AFRICAN AVERAGE	RANK/54
PARTICIPATION	24.0	45.9	42
RIGHTS	28.7	47.3	48
GENDER	54.6	54.8	28

HUMAN DEVELOPMENT			
	SCORE/100	AFRICAN AVERAGE	RANK/54
WELFARE	52.9	50.9	24
EDUCATION	41.4	48.8	36
HEALTH	65.5	69.9	37

TRENDS SINCE 2011, OVERALL GOVERNANCE & CATEGORY LEVELS

■ 2011-2014 — African average



Data Table

8

DJIBOUTI

Score/100; 100 = best

	2000	2001	2002	2003	2004	2005	2006	2007	2008	2009	2010	2011	2012	2013	2014	Change 2011-2014
OVERALL SCORE	44.4	45.3	45.5	45.2	45.7	45.1	44.9	44.9	45.7	45.7	45.3	45.4	46.1	45.8	45.9	+0.5
SAFETY & RULE OF LAW	53.3	53.1	52.9	52.3	53.4	53.6	53.0	53.4	53.7	51.8	51.7	50.9	50.0	49.6	52.4	+1.5
RULE OF LAW	45.6	45.6	42.7	42.7	42.7	42.7	42.7	42.7	42.7	42.7	42.7	42.7	42.7	42.9	49.7	+6.9
Property Rights (AfDB/WB/BS/HER/WEF)	57.1	57.1	42.9	42.9	42.9	42.9	42.9	42.9	42.9	42.9	42.9	42.9	42.9	43.6	40.1	-2.8
Judicial Process (EIU/GI)	12.5	12.5	12.5	12.5	12.5	12.5	12.5	12.5	12.5	12.5	12.5	12.5	12.5	12.5	12.5	0.0
Judicial Independence (BS/GI/WEF)	25.0	25.0	25.0	25.0	25.0	25.0	25.0	25.0	25.0	25.0	25.0	25.0	25.0	25.0	62.5	+37.5
Sanctions (CDD)	100.0	100.0	100.0	100.0	100.0	100.0	100.0	100.0	100.0	100.0	100.0	100.0	100.0	100.0	100.0	0.0
Transfers of Power (EIU)	33.3	33.3	33.3	33.3	33.3	33.3	33.3	33.3	33.3	33.3	33.3	33.3	33.3	33.3	33.3	0.0
ACCOUNTABILITY	18.7	18.7	18.7	18.7	21.0	21.9	21.5	23.1	24.7	28.8	27.2	28.8	30.3	28.3	28.7	-0.0
Accountability, Transparency & Corruption in the Public Sector (AfDB/WB)	52.7	52.7	52.7	52.7	52.7	52.7	52.7	52.7	52.7	52.7	46.4	46.4	46.4	42.3	42.3	-4.2
Access to Information (GI)	12.5	12.5	12.5	12.5	12.5	12.5	12.5	12.5	12.5	12.5	12.5	12.5	12.5	12.5	12.5	0.0
Online Services (UNDESA)	2.5	2.5	2.5	2.5	8.9	25.0	22.1	19.3	16.4	11.6	6.9	17.6	28.3	18.7	9.1	-8.5
Corruption & Bureaucracy (WB)	42.9	42.9	42.9	42.9	52.6	42.9	42.9	57.1	71.4	71.4	71.4	71.4	71.4	71.4	71.4	0.0
Corruption in Government & Public Officials (EIU)	20.0	20.0	20.0	20.0	20.0	20.0	20.0	20.0	20.0	20.0	20.0	20.0	20.0	20.0	20.0	0.0
Diversion of Public Funds (WEF)
Accountability of Public Officials (EIU)	0.0	0.0	0.0	0.0	0.0	0.0	0.0	0.0	0.0	33.3	33.3	33.3	33.3	33.3	33.3	0.0
Public Sector Corruption Investigation (GI)	0.0	0.0	0.0	0.0	0.0	0.0	0.0	0.0	0.0	0.0	0.0	0.0	0.0	0.0	12.5	+12.5
Prosecution of Abuse of Office (BS)
PERSONAL SAFETY	60.4	58.3	60.4	58.3	60.4	60.3	58.1	58.1	64.6	51.0	52.1	50.0	45.8	45.8	49.9	-0.1
Safety of the Person (EIU)	100.0	100.0	100.0	100.0	100.0	100.0	100.0	100.0	100.0	50.0	50.0	50.0	50.0	50.0	50.0	0.0
Police Services (GI/WEF)	0.0	0.0	0.0	0.0	0.0	0.0	0.0	0.0	0.0	0.0	0.0	0.0	0.0	0.0	33.3	+33.3
Social Unrest (EIU)	75.0	75.0	75.0	75.0	75.0	75.0	75.0	75.0	75.0	62.5	50.0	50.0	50.0	50.0	50.0	0.0
Violent Crime (EIU)	75.0	75.0	75.0	75.0	75.0	75.0	75.0	75.0	75.0	75.0	75.0	75.0	75.0	75.0	75.0	0.0
Political Violence (ACLEDD/PTS)	87.5	75.0	87.5	75.0	87.5	86.9	73.8	73.8	87.5	93.8	87.5	75.0	75.0	75.0	65.8	-9.2
Human Trafficking (USDS)	25.0	25.0	25.0	25.0	25.0	25.0	25.0	25.0	50.0	25.0	50.0	50.0	25.0	25.0	25.0	-25.0
NATIONAL SECURITY	88.6	89.7	89.7	89.6	89.7	89.6	89.7	89.6	82.9	84.6	84.6	82.1	81.3	81.2	81.1	-1.0
Government Involvement in Armed Conflict (UCDP)	100.0	100.0	100.0	100.0	100.0	100.0	100.0	100.0	66.7	100.0	100.0	100.0	83.3	83.3	83.3	-16.7
Domestic Armed Conflict (EIU)	75.0	75.0	75.0	75.0	75.0	75.0	75.0	75.0	100.0	75.0	75.0	50.0	50.0	50.0	50.0	0.0
Cross-border Tensions (EIU)	75.0	75.0	75.0	75.0	75.0	75.0	75.0	75.0	50.0	50.0	50.0	62.5	75.0	75.0	75.0	+12.5
Internally Displaced People (IDMC)	100.0	100.0	100.0	100.0	100.0	100.0	100.0	100.0	100.0	100.0	100.0	100.0	100.0	100.0	100.0	0.0
Political Refugees (UNHCR)	92.8	98.3	98.3	98.1	98.3	98.2	98.3	97.8	97.8	98.0	98.2	98.1	98.0	97.6	97.4	-0.7
PARTICIPATION & HUMAN RIGHTS	39.4	39.3	40.5	39.3	39.5	35.8	35.5	34.9	34.9	35.8	35.2	36.6	37.0	37.0	35.7	-0.8
PARTICIPATION	40.9	40.9	40.9	35.3	35.3	24.2	24.2	24.2	24.2	24.2	18.6	19.2	19.2	24.0	24.0	+4.7
Political Rights (FH)	50.0	50.0	50.0	33.3	33.3	33.3	33.3	33.3	33.3	33.3	16.7	16.7	16.7	16.7	16.7	0.0
Political Participation (EIU)	14.2	14.2	14.2	14.2	14.2	14.2	14.2	14.2	14.2	14.2	14.2	28.5	28.5	42.7	42.7	+14.2
Free & Fair Elections (BS)
Free & Fair Executive Elections (IREEP)	58.3	58.3	58.3	58.3	58.3	25.0	25.0	25.0	25.0	25.0	25.0	12.5	12.5	12.5	12.5	0.0
Effective Power to Govern (BS)
RIGHTS	26.6	26.2	29.4	29.3	29.2	29.1	29.1	28.8	28.7	28.7	31.7	34.6	36.6	32.5	28.7	-5.9
Freedom of Expression (BS/FH/GI/RSF)	34.5	32.8	33.6	33.2	32.8	31.9	31.9	30.7	30.2	30.2	30.2	29.8	29.8	28.0	27.7	-2.1
Freedom of Association & Assembly (BS/GI)	25.0	25.0	25.0	25.0	25.0	25.0	25.0	25.0	25.0	25.0	25.0	25.0	25.0	25.0	12.5	-12.5
Civil Liberties (BS/FH)	33.3	33.3	33.3	33.3	33.3	33.3	33.3	33.3	33.3	33.3	33.3	33.3	33.3	33.3	33.3	0.0
International Human Rights Conventions (OHCHR/UNOLA)	15.0	15.0	30.0	30.0	30.0	30.0	30.0	30.0	30.0	30.0	45.0	60.0	70.0	70.0	70.0	+10.0
Human Rights (EIU)	25.0	25.0	25.0	25.0	25.0	25.0	25.0	25.0	25.0	25.0	25.0	25.0	25.0	6.3	0.0	-25.0
GENDER	50.8	50.8	51.1	53.2	53.9	54.1	53.2	51.6	51.9	54.6	55.2	55.8	55.2	54.5	54.6	-1.2
Gender Equality (AfDB/WB)	56.3	56.3	56.3	56.3	56.3	56.3	50.0	31.3	31.3	43.8	43.8	43.8	43.8	41.7	39.6	-4.2
Gender Balance in Education (WB)	31.6	31.1	32.7	36.1	39.5	40.2	40.6	47.0	48.1	51.2	54.3	57.5	53.7	51.8	54.5	-3.0
Women's Participation in the Labour Force (WB)	25.4	25.9	26.3	26.8	27.3	27.8	28.3	29.0	29.6	30.3	30.8	31.2	31.5	31.7	31.7	+0.5
Gender Equality in the Workplace (GI)	66.7	66.7	66.7	66.7	66.7	66.7	66.7	66.7	66.7	66.7	66.7	66.7	66.7	66.7	66.7	0.0
Legislation on Violence against Women (OECD)
Women in Politics (GI/IPU)	25.0	25.0	25.0	33.5	33.5	33.5	33.5	35.8	35.8	35.8	35.8	35.8	35.8	35.0	35.0	-0.9
Women in the Judiciary (GI)	100.0	100.0	100.0	100.0	100.0	100.0	100.0	100.0	100.0	100.0	100.0	100.0	100.0	100.0	100.0	0.0
SUSTAINABLE ECONOMIC OPPORTUNITY	42.1	43.0	42.0	41.7	42.3	42.3	41.3	41.0	39.8	39.1	39.8	40.9	43.2	43.1	42.3	+1.4
PUBLIC MANAGEMENT	46.2	49.2	45.0	43.6	45.4	47.7	43.2	38.7	41.4	40.0	41.9	42.9	41.3	43.3	42.7	-0.2
Public Administration (AfDB/WB)	50.0	50.0	50.0	50.0	50.0	50.0	50.0	50.0	50.0	50.0	50.0	50.0	50.0	54.7	51.6	+1.6
Statistical Capacity (WB)	44.8	44.8	44.8	44.8	44.8	44.8	47.8	35.8	31.3	31.3	37.3	37.3	40.3	40.3	38.8	+1.5

Score/100; 100 = best

	2000	2001	2002	2003	2004	2005	2006	2007	2008	2009	2010	2011	2012	2013	2014	Change 2011- 2014
Diversification (AfDB/OECD/UNDP)	28.8	54.8	20.1	13.8	26.1	44.6	23.9	5.6	8.9	6.6	3.0	4.2	7.9	11.9	11.9	+7.7
Budget Management (AfDB/WB)	52.8	52.8	52.8	52.8	52.8	47.2	47.2	47.2	47.2	47.2	47.2	47.2	34.7	47.2	41.7	-5.6
Ratio of Total Revenue to Total Expenditure (AfDB/AU/UNECA)	52.2	52.8	46.8	51.4	52.5	57.9	51.1	50.9	60.2	45.3	55.9	54.4	50.3	49.7	50.6	-3.8
Fiscal Policy (AfDB/WB)	56.3	56.3	56.3	56.3	56.3	50.8	43.7	43.7	50.8	56.3	56.3	67.5	67.5	67.5	61.9	-5.6
Ratio of External Debt Service to Exports (EIU)	81.7	83.0	85.6	75.0	78.5	85.5	76.6	69.5	79.0	74.7	79.0	77.6	73.7	75.2	80.5	+2.8
Revenue Mobilisation (AfDB/WB/ICTD)	49.2	48.3	48.8	48.5	48.1	48.1	48.3	45.6	45.1	48.1	48.2	48.3	47.3	43.7	47.3	-0.9
Access to Financial Records of State-owned Companies (GI)	0.0	0.0	0.0	0.0	0.0	0.0	0.0	0.0	0.0	0.0	0.0	0.0	0.0	0.0	0.0	0.0
BUSINESS ENVIRONMENT	33.1	33.1	33.1	33.1	33.1	33.1	33.1	35.5	35.5	39.2	39.2	41.1	42.1	42.1	39.8	-1.3
Competitive Environment (AfDB/WB/BS/GI)	43.8	43.8	43.8	43.8	43.8	43.8	43.8	51.0	51.0	51.0	51.0	51.0	54.2	54.2	41.7	-9.4
Customs Procedures (WEF)
Investment Climate (HER)	55.6	55.6	55.6	55.6	55.6	55.6	55.6	55.6	55.6	66.7	66.7	72.2	72.2	72.2	77.8	+5.6
Bureaucracy & Red Tape (EIU)	0.0	0.0	0.0	0.0	0.0	0.0	0.0	0.0	0.0	0.0	0.0	0.0	0.0	0.0	0.0	0.0
Soundness of Banks (WEF)
INFRASTRUCTURE	36.4	36.9	37.1	37.5	37.9	38.2	38.5	38.9	39.6	33.7	34.5	35.3	39.4	39.6	39.9	+4.6
Road Network (WEF)
Rail Network (EIU)	25.0	25.0	25.0	25.0	25.0	25.0	25.0	25.0	25.0	25.0	25.0	25.0	25.0	25.0	25.0	0.0
Air Transport (GI/WEF)	25.0	25.0	25.0	25.0	25.0	25.0	25.0	25.0	25.0	25.0	25.0	25.0	25.0	25.0	25.0	0.0
Access to Water (WHO/UNICEF)	64.2	64.7	65.1	65.6	66.1	66.6	67.1	67.5	68.0	68.5	69.0	69.5	69.5	69.6	69.6	+0.1
Electricity Supply (WEF)
Telephone & IT Infrastructure (EIU)	66.7	66.7	66.7	66.7	66.7	66.7	66.7	66.7	66.7	33.3	33.3	33.3	50.0	50.0	50.0	+16.7
Digital Connectivity (ITU)	1.2	3.1	3.9	5.3	6.8	7.7	8.7	10.4	13.3	16.7	20.0	23.7	27.4	28.6	29.9	+6.2
RURAL SECTOR	52.7	52.7	52.7	52.7	52.7	50.4	50.4	51.0	42.6	43.4	43.4	44.1	50.1	47.1	46.8	+2.7
Public Resources for Rural Development (IFAD)	58.3	58.3	58.3	58.3	58.3	58.3	58.3	58.3	43.8	43.8	43.8	43.8	40.8	31.3	31.3	-12.5
Accountability, Transparency & Corruption in Rural Areas (IFAD)	47.0	47.0	47.0	47.0	47.0	47.0	47.0	47.0	48.4	48.4	48.4	42.4	36.3	36.3	36.3	-6.1
Land & Water for Low-income Rural Populations (IFAD)	45.4	45.4	45.4	45.4	45.4	41.8	41.8	43.6	55.1	55.1	55.1	55.1	55.0	55.0	55.0	-0.2
Rural Business Climate (IFAD)	64.4	64.4	64.4	64.4	64.4	64.4	64.4	66.2	46.8	52.3	52.3	55.1	67.2	64.4	64.9	+9.9
Agricultural Research & Extension Services (IFAD)	37.2	37.2	37.2	37.2	37.2	37.2	37.2	37.2	18.4	18.4	18.4	18.4	37.2	37.2	37.2	+18.7
Agricultural Policy Costs (WEF)
Engagement with Low-income Rural Populations (IFAD)	48.2	48.2	48.2	48.2	48.2	48.2	48.2	48.2	44.1	44.1	44.1	44.1	55.9	55.9	52.9	+8.8
Equal Representation in Rural Areas (IFAD)	68.8	68.8	68.8	68.8	68.8	56.3	56.3	56.3	41.8	41.8	41.8	50.0	58.3	50.0	50.0	0.0
HUMAN DEVELOPMENT	43.0	46.0	46.8	47.4	47.7	48.7	49.6	50.5	54.3	56.3	54.8	53.4	54.0	53.6	53.3	-0.2
WELFARE	53.4	53.4	53.4	53.4	53.4	53.4	53.4	51.9	56.2	59.3	61.1	54.9	55.5	53.5	52.9	-1.9
Welfare Regime (BS)
Welfare Services (Health & Education) (AfDB/WB)	73.2	73.2	73.2	73.2	73.2	73.2	73.2	67.0	67.0	67.0	67.0	67.0	67.0	64.9	64.9	-2.1
Social Protection & Labour (AfDB/WB)	39.7	39.7	39.7	39.7	39.7	39.7	39.7	39.7	45.2	45.2	52.4	52.4	53.5	47.5	47.5	-4.9
Social Exclusion (BS)
Equity of Public Resource Use (AfDB/WB)	53.6	53.6	53.6	53.6	53.6	53.6	53.6	53.6	59.8	59.8	59.8	59.8	55.7	55.7	53.6	-6.3
Environmental Policy (BS)
Environmental Sustainability (AfDB/WB)	47.2	47.2	47.2	47.2	47.2	47.2	47.2	47.2	52.8	65.3	65.3	40.3	45.8	45.8	45.8	+5.6
EDUCATION	22.9	23.4	24.1	25.0	25.9	27.2	28.6	30.1	32.8	34.2	35.3	37.0	38.0	38.7	41.4	+4.4
Education Provision & Quality (BS)
Education System Quality (WEF)
Ratio of Pupils to Teachers in Primary School (UNESCO)	74.8	74.8	74.8	74.8	74.8	75.4	75.9	73.8	75.4	75.3	74.7	74.1	74.4	75.2	76.3	+2.3
Literacy (UNESCO)
Primary School Completion (WB)	9.4	9.0	10.4	11.9	13.4	14.9	19.9	24.3	28.7	30.8	32.8	34.9	34.6	34.4	42.7	+7.8
Secondary School Enrolment (UNESCO)	7.4	9.3	9.9	11.5	13.1	15.2	15.0	18.2	22.8	25.6	28.6	31.6	35.4	37.6	39.1	+7.5
Tertiary Education Enrolment (UNESCO)	0.0	0.7	1.2	1.7	2.2	3.4	3.7	4.1	4.1	5.2	5.2	7.7	7.7	7.7	7.7	0.0
HEALTH	52.6	61.1	62.8	63.8	63.9	65.5	66.9	69.5	73.9	75.2	67.9	68.4	68.4	68.5	65.5	-2.9
Access to Sanitation (WHO/UNICEF)	68.2	67.5	66.7	66.0	65.3	64.6	63.9	63.2	62.5	61.8	61.1	60.4	60.4	60.5	60.5	+0.1
Child Mortality (IGME)	60.2	61.3	62.4	63.5	64.7	65.9	67.1	68.2	69.4	70.5	71.5	72.6	73.5	74.5	74.5	+1.9
Maternal Mortality (WHO)	84.2	84.7	85.1	85.6	86.0	86.5	87.0	87.6	88.1	88.7	89.2	89.5	89.9	90.2	90.2	+0.6
Undernourishment (WB)	14.7	21.0	25.4	30.2	35.4	42.1	49.6	56.3	61.9	65.3	67.4	68.9	71.6	75.0	75.0	+6.1
Disease (Malaria & TB) (WHO)	84.1	82.3	80.2	78.1	76.5	75.5	75.2	77.7	78.2	78.5	78.3	77.5	75.9	73.8	73.8	-3.7
Immunisation (Measles, DPT & Hepatitis B) (WB/WHO)	34.2	36.2	44.6	48.3	44.5	48.9	50.1	58.4	82.0	86.8	86.4	85.3	80.6	80.1	80.1	-5.2
Antiretroviral Treatment (ART) Provision (UNAIDS)	0.0	14.1	18.3	20.2	19.2	19.8	+1.5
Public Health Campaigns (GI)	75.0	75.0	75.0	75.0	75.0	75.0	75.0	75.0	75.0	75.0	75.0	75.0	75.0	75.0	50.0	-25.0

Djibouti within East Africa

10

EAST AFRICA

2014 SCORE/100
2014 RANK/13; 1=BEST



OVERALL GOVERNANCE

44.3



SAFETY & RULE OF LAW

43.9



PARTICIPATION
& HUMAN RIGHTS

41.8



SUSTAINABLE ECONOMIC
OPPORTUNITY

38.5



HUMAN DEVELOPMENT

53.1

BURUNDI

	45.8	9
	39.8	9
	50.3	6
	35.4	8
	57.7	6

COMOROS

	48.5	7
	56.2	4
	51.3	5
	27.4	10
	58.9	5

DJIBOUTI

	45.9	8
	52.4	8
	35.7	8
	42.3	7
	53.3	9

ERITREA

	29.9	10
	30.6	10
	22.1	11
	20.3	11
	46.5	10

ETHIOPIA

	48.6	6
	55.1	5
	35.7	9
	46.9	6
	56.7	8

KENYA

	58.8	3
	53.8	6
	63.3	3
	54.9	3
	63.0	3

RWANDA

	60.7	2
	62.0	2
	46.3	7
	63.5	2
	71.0	2

SEYCHELLES

	70.3	1
	71.1	1
	63.7	2
	64.1	1
	82.4	1

SOMALIA

	8.5	13
	5.5	13
	10.4	13
	4.1	13
	14.0	13

SOUTH SUDAN

	19.9	12
	14.9	12
	20.6	12
	13.5	12
	30.5	12

SUDAN

	28.3	11
	20.1	11
	22.6	10
	31.8	9
	38.7	11

TANZANIA

	56.7	4
	56.9	3
	64.1	1
	49.0	4
	56.8	7

UGANDA

	54.6	5
	53.0	7
	57.2	4
	47.8	5
	60.1	4

The 2015 IIAG was calculated using data from 33 independent institutions.

African Development Bank (AfDB)
 African Union Commission (AUC)
 Armed Conflict Location & Event Data Project (ACLED)
 Bertelsmann Stiftung (BS)
 Economist Intelligence Unit (EIU)
 Freedom House (FH)
 Ghana Center for Democratic Development (CDD-Ghana)
 Global Integrity (GI)
 Institut de Recherche Empirique en Economie Politique (IREEP)
 Inter-agency Group for Child Mortality Estimation (IGME)
 Internal Displacement Monitoring Centre (IDMC)
 International Centre for Tax and Development (ICTD)
 International Fund for Agricultural Development (IFAD)
 International Telecommunication Union (ITU)
 Inter-Parliamentary Union (IPU)
 Joint United Nations Programme on HIV/AIDS (UNAIDS)
 Office of the High Commissioner for Human Rights (OHCHR)
 Office of the United Nations High Commissioner for Refugees (UNHCR)
 Organisation for Economic Co-operation and Development (OECD)
 Political Terror Scale (PTS)
 Reporters sans frontières (RSF)
 The Heritage Foundation (HER)
 United Nations Children's Fund (UNICEF)
 United Nations Department of Economic and Social Affairs (UNDESA)
 United Nations Development Programme (UNDP)
 United Nations Economic Commission for Africa (UNECA)
 United Nations Educational, Scientific and Cultural Organization (UNESCO)
 United Nations Office of Legal Affairs (UNOLA)
 United States Department of State - Office to Monitor and Combat Trafficking in Persons (USDS)
 Uppsala University, Department of Peace and Conflict Research - Uppsala Conflict Data Programme (UCDP)
 World Bank (WB)
 World Economic Forum (WEF)
 World Health Organization (WHO)

To explore the 2015 IIAG further, including information on the IIAG methodology and data sources, download the IIAG Data Portal, Executive Summary or Sub-category Insights from www.moibrahimfoundation.org/iiag/downloads/.



The IIAG Data Portal is an interactive Excel-based application, available for in-depth analysis of the results of the IIAG, in English or French.

- > EXPLORE KEY FINDINGS
- > EXPLORE BY COUNTRY
- > EXPLORE BY REGION, REC OR GEOGRAPHICAL GROUPING
- > EXPLORE BY INDICATOR
- > COMPARE COUNTRIES OR GROUPS



Join the discussion on Twitter or Facebook:

[@Mo_IbrahimFdn](https://twitter.com/Mo_IbrahimFdn) #IIAG [f /MoIbrahimFoundation](https://www.facebook.com/MoIbrahimFoundation)

www.moibrahimfoundation.org

 /MoIbrahimFoundation  @Mo_IbrahimFdn #IIAG