



# 2015

---

Ibrahim Index of  
African Governance

---

**COUNTRY INSIGHTS**

---

**MALAWI**



# Contents

---

What is the IIAG?	3
How does Malawi perform?	4
Data Table	8
Malawi within Southern Africa	10
Data Providers & IIAG Resources	11

---

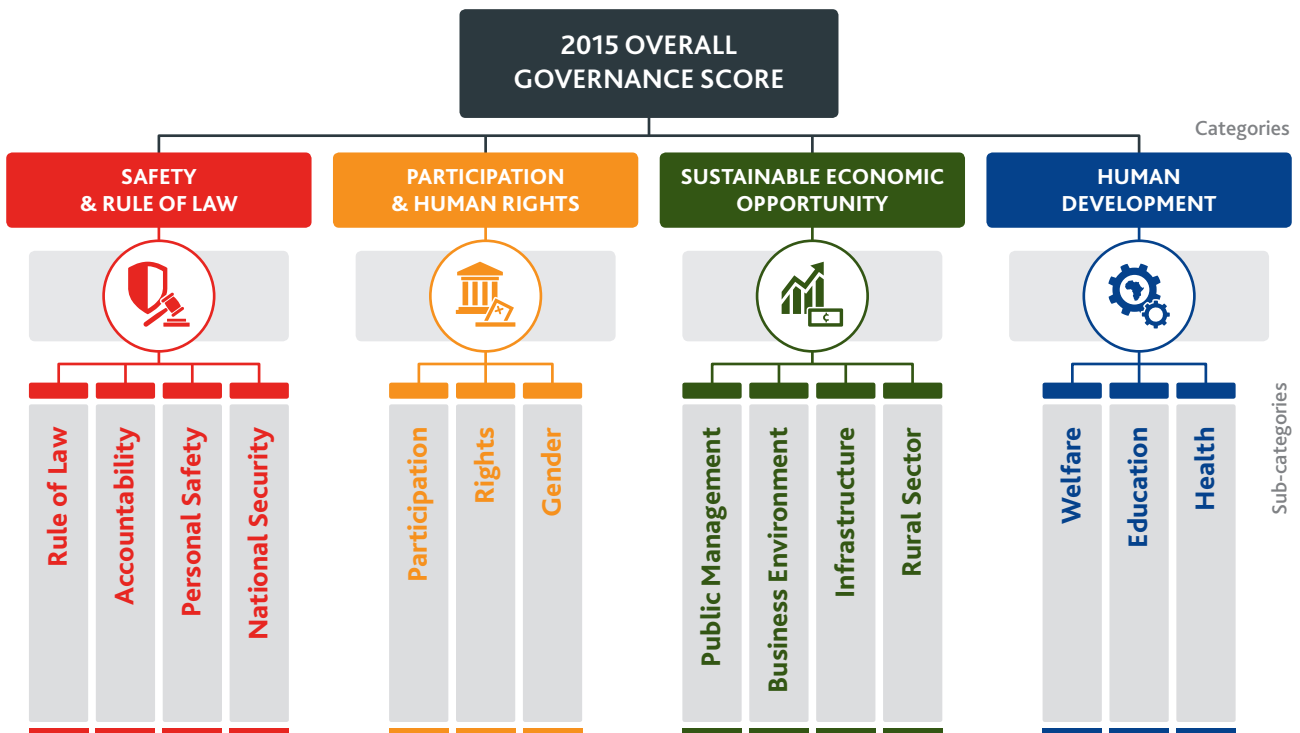
All figures have been rounded to the nearest one decimal place. This means that countries may appear to have the same score, or the change over time may appear inaccurate, but this is not the case when all decimal places are taken into account. Countries have been ranked and trends have been described on the basis of full scores not the rounded numbers that appear here.

Regional Economic Community (REC) averages are calculated by applying the REC's current membership configuration for all data years.

The Mo Ibrahim Foundation (MIF) is aware that some sources update their data sets after our documentation is sent to print. IIAG raw data are correct as per the date 'last accessed', which is stated for each indicator within the Data Portal ([www.moibrahimfoundation.org/iiag/downloads/](http://www.moibrahimfoundation.org/iiag/downloads/)).

South Sudan and Sudan are excluded from all group averages pre-2011 as neither country existed in their current configurations before the secession of South Sudan in 2011.

---



The Ibrahim Index of African Governance (IIAG) measures the quality of governance in every African country on an annual basis. It does this by compiling data from diverse global sources to build an accurate and detailed picture of governance performance in African countries.

The broad aim of the IIAG is to better inform and sustain the debate on African governance by providing a transparent and user-friendly resource to:

- support citizens, governments, institutions and the private sector to accurately assess the delivery of public goods and services, and policy outcomes.

- encourage data-driven narratives on governance issues.
- help determine, debate and strengthen government performance.

The IIAG was created in 2007 in recognition of the need for a quantifiable tool to accurately measure and monitor African governance performance, its progress over time and across countries, and as a means of supporting effective and responsive solutions to complex public policy challenges in developing countries. Policies need to be evaluated by their results, which can only be done if accompanied by robust data.

### 2015 Ibrahim Index of African Governance

**1** overall governance score is:



### MALAWI

Malawi shows a slight decline in overall governance, prompted by deterioration in *Sustainable Economic Opportunity*. Even though Malawi demonstrates improvement in the other three categories, this is marginal.

At the sub-category level, Malawi has made impressive gains in *Personal Safety* and *Rights*, the third largest on the continent. At the same time, Malawi's declines in *Accountability* and *Rural Sector* make it the most deteriorated country in Southern Africa in these two sub-categories.

#### **Overall governance: marginal decline demonstrates diminished progress.**

Malawi scores 56.7 (out of 100) in overall governance, ranking 17<sup>th</sup> (out of 54) in Africa.

Malawi shows overall governance deterioration (-0.2) since 2011.

Malawi scores higher than the African average and lower than the regional average for Southern Africa.

Malawi is ranked 7<sup>th</sup> in Southern Africa in overall governance.

#### **Safety & Rule of Law: leap forward in *Personal Safety* disguises negative *Accountability* trend.**

Malawi scores 64.0 in *Safety & Rule of Law*, ranking 11<sup>th</sup> on the continent.

Within the *Safety & Rule of Law* category, Malawi's best sub-category performance is in *National Security*, scoring 95.0.

Malawi's weakest sub-category performance in the *Safety & Rule of Law* category is in *Accountability*, scoring 35.1.

Malawi has shown an improvement (+1.0) in *Safety & Rule of Law* since 2011. This has been driven by improvement in two of the four sub-categories: *Rule of Law* (+5.6) and *Personal Safety* (+10.4).

#### **Participation & Human Rights: progress in *Rights* prompts category improvement.**

Malawi scores 63.0 in *Participation & Human Rights*, ranking 15<sup>th</sup> on the continent.

Within the *Participation & Human Rights* category, Malawi's best sub-category performance is in *Gender*, scoring 66.1.

Malawi's weakest sub-category performance in the *Participation & Human Rights* category is in *Rights*, scoring 60.1.

Malawi has shown an improvement (+0.5) in *Participation & Human Rights* since 2011. This has been driven by improvement in one of the three sub-categories: *Rights* (+5.0).

***Sustainable Economic Opportunity: Malawi's only category deterioration.***

Malawi scores 45.6 in *Sustainable Economic Opportunity*, ranking 25<sup>th</sup> on the continent.

Within the *Sustainable Economic Opportunity* category, Malawi's best sub-category performance is in *Rural Sector*, scoring 51.4.

Malawi's weakest sub-category performance in the *Sustainable Economic Opportunity* category is in *Infrastructure*, scoring 36.3.

Malawi has shown a deterioration (-3.1) in *Sustainable Economic Opportunity* since 2011. This has been driven by deterioration in three of the four sub-categories: *Public Management* (-2.1), *Business Environment* (-5.5) and *Rural Sector* (-5.7).

***Human Development: improvement in Welfare and Education lead the way.***

Malawi scores 54.2 in *Human Development*, ranking 29<sup>th</sup> on the continent.

Within the *Human Development* category, Malawi's best sub-category performance is in *Health*, scoring 70.3.

Malawi's weakest sub-category performance in the *Human Development* category is in *Education*, scoring 39.2.

Malawi has shown an improvement (+0.7) in *Human Development* since 2011. This has been driven by improvement in two of the three sub-categories: *Welfare* (+1.1) and *Education* (+1.1).

# How does Malawi perform?

6

## MALAWI



OVERALL GOVERNANCE

2014 SCORES & RANKS

SCORE/100

56.7

AFRICAN AVERAGE

50.1

CHANGE SINCE 2011

-0.2

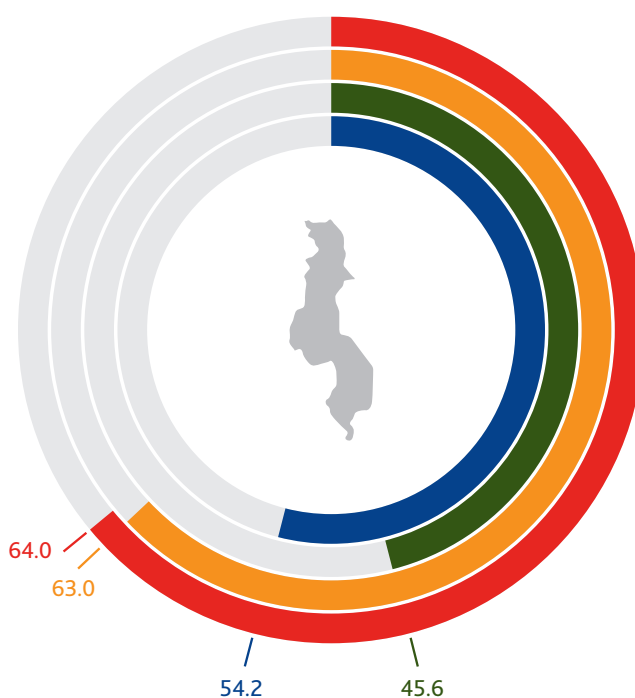
RANK/54

17

Head of State	President Peter Mutharika
Date came to power	31 May 2014
Head of Government	President Peter Mutharika
Date came to power	31 May 2014
Region	Southern Africa
REC Membership(s)	COMESA, SADC
Population (total m)	16.8
Urban population (% of total population)	16.1
African Peer Review Mechanism	Member
African Charter on Democracy, Elections and Governance	Not signed, Not ratified
African Charter on Statistics	Signed, Ratified

Information correct at 23 July 2015

- Safety & Rule of Law
- Participation & Human Rights
- Sustainable Economic Opportunity
- Human Development



SAFETY & RULE OF LAW



PARTICIPATION & HUMAN RIGHTS



SUSTAINABLE ECONOMIC OPPORTUNITY



HUMAN DEVELOPMENT

SCORE/100

64.0

SCORE/100

63.0

SCORE/100

45.6

SCORE/100

54.2

AFRICAN AVERAGE

51.3

AFRICAN AVERAGE

49.3

AFRICAN AVERAGE

43.2

AFRICAN AVERAGE

56.4

CHANGE SINCE 2011

+1.0

CHANGE SINCE 2011

+0.5

CHANGE SINCE 2011

-3.1

CHANGE SINCE 2011

+0.7

RANK/54

11

RANK/54

15

RANK/54

25

RANK/54

29

### 2014 SUB-CATEGORY SCORES & RANKS

SAFETY & RULE OF LAW			
	SCORE/100	AFRICAN AVERAGE	RANK/54
RULE OF LAW	68.5	50.8	10
ACCOUNTABILITY	35.1	35.5	25
PERSONAL SAFETY	57.7	44.0	10
NATIONAL SECURITY	95.0	74.8	5

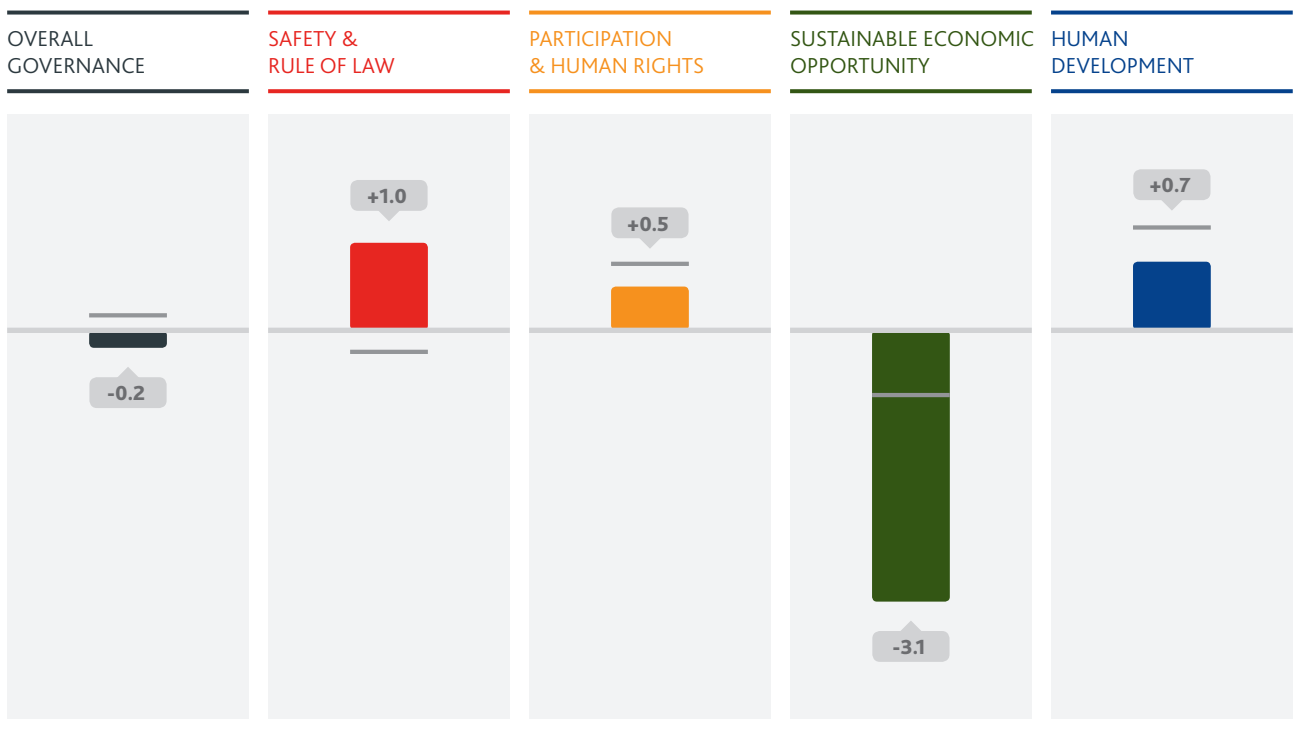
SUSTAINABLE ECONOMIC OPPORTUNITY			
	SCORE/100	AFRICAN AVERAGE	RANK/54
PUBLIC MANAGEMENT	47.9	46.0	24
BUSINESS ENVIRONMENT	46.6	40.7	22
INFRASTRUCTURE	36.3	36.5	27
RURAL SECTOR	51.4	50.5	28

PARTICIPATION & HUMAN RIGHTS			
	SCORE/100	AFRICAN AVERAGE	RANK/54
PARTICIPATION	62.8	45.9	18
RIGHTS	60.1	47.3	13
GENDER	66.1	54.8	14

HUMAN DEVELOPMENT			
	SCORE/100	AFRICAN AVERAGE	RANK/54
WELFARE	53.2	50.9	22
EDUCATION	39.2	48.8	41
HEALTH	70.3	69.9	28

### TRENDS SINCE 2011, OVERALL GOVERNANCE & CATEGORY LEVELS

■ 2011-2014 — African average



# Data Table

8

## MALAWI

Score/100; 100 = best

	2000	2001	2002	2003	2004	2005	2006	2007	2008	2009	2010	2011	2012	2013	2014	Change 2011-2014
<b>OVERALL SCORE</b>	52.2	52.9	52.3	53.0	53.0	53.2	54.6	55.7	55.6	56.5	57.1	56.9	57.3	58.1	56.7	-0.2
<b>SAFETY &amp; RULE OF LAW</b>	65.6	65.2	64.3	64.6	64.4	64.8	67.0	69.0	66.9	65.7	65.3	63.1	64.6	65.1	64.0	+1.0
<b>RULE OF LAW</b>	71.5	71.5	71.5	71.5	71.5	71.5	70.8	70.8	69.8	64.2	63.6	62.9	67.0	68.7	68.5	+5.6
Property Rights (AfDB/WB/BS/HER/WEF)	62.2	62.2	62.2	62.2	62.2	62.2	58.6	58.6	62.2	60.4	59.9	58.9	56.1	57.7	56.2	-2.7
Judicial Process (EIU/GI)	58.3	58.3	58.3	58.3	58.3	58.3	58.3	58.3	58.3	58.3	58.3	58.3	58.3	58.3	58.3	0.0
Judicial Independence (BS/GI/WEF)	70.2	70.2	70.2	70.2	70.2	70.2	70.2	70.2	70.2	68.8	66.6	64.0	62.4	61.0	61.2	-2.8
Sanctions (CDD)	100.0	100.0	100.0	100.0	100.0	100.0	100.0	100.0	100.0	100.0	100.0	100.0	100.0	100.0	100.0	0.0
Transfers of Power (EIU)	66.7	66.7	66.7	66.7	66.7	66.7	66.7	66.7	58.3	33.3	33.3	33.3	58.3	66.7	66.7	+33.3
<b>ACCOUNTABILITY</b>	40.4	38.8	37.2	37.2	40.5	39.3	40.3	42.1	43.1	42.6	40.4	42.2	43.2	41.7	35.1	-7.1
Accountability, Transparency & Corruption in the Public Sector (AfDB/WB)	53.6	53.6	53.6	53.6	53.6	53.6	53.6	59.8	59.8	59.8	59.8	59.8	61.9	54.8	54.8	-5.1
Access to Information (GI)	41.7	41.7	41.7	41.7	41.7	41.7	41.7	41.7	41.7	41.7	41.7	41.7	41.7	41.7	25.0	-16.7
Online Services (UNDESA)	6.3	6.3	6.3	6.3	22.3	25.0	27.3	29.6	31.9	17.1	2.3	16.7	31.1	28.1	25.0	+8.3
Corruption & Bureaucracy (WB)	57.1	42.9	28.6	28.6	42.3	28.6	28.6	28.6	28.6	28.6	28.6	42.9	42.9	42.9	42.9	0.0
Corruption in Government & Public Officials (EIU)	20.0	20.0	20.0	20.0	20.0	20.0	20.0	20.0	20.0	20.0	20.0	20.0	20.0	15.0	0.0	-20.0
Diversion of Public Funds (WEF)	58.4	58.4	58.4	58.4	58.4	58.4	58.4	58.4	58.4	61.2	56.5	43.8	36.4	38.0	25.7	-18.1
Accountability of Public Officials (EIU)	33.3	33.3	33.3	33.3	33.3	33.3	33.3	33.3	33.3	33.3	33.3	33.3	33.3	33.3	33.3	0.0
Public Sector Corruption Investigation (GI)	50.0	50.0	50.0	50.0	50.0	50.0	50.0	50.0	50.0	50.0	50.0	50.0	50.0	50.0	37.5	-12.5
Prosecution of Abuse of Office (BS)	42.9	42.9	42.9	42.9	42.9	42.9	50.0	57.1	64.3	71.4	71.4	71.4	71.4	71.4	71.4	0.0
<b>PERSONAL SAFETY</b>	55.7	55.5	53.5	54.7	50.5	53.7	62.0	63.1	54.8	56.0	57.3	47.2	48.3	54.8	57.7	+10.4
Safety of the Person (EIU)	50.0	50.0	50.0	50.0	50.0	50.0	50.0	50.0	50.0	50.0	50.0	50.0	50.0	50.0	50.0	0.0
Police Services (GI/WEF)	47.8	47.8	47.8	47.8	47.8	47.8	47.8	47.8	47.8	48.5	49.3	44.9	39.7	41.4	58.4	+13.5
Social Unrest (EIU)	50.0	50.0	50.0	50.0	50.0	50.0	50.0	50.0	50.0	50.0	68.8	25.0	43.8	50.0	50.0	+25.0
Violent Crime (EIU)	50.0	50.0	50.0	50.0	50.0	50.0	50.0	50.0	50.0	50.0	50.0	50.0	50.0	50.0	50.0	0.0
Political Violence (ACLEDD/PTS)	86.3	85.2	73.3	80.1	80.1	74.1	74.4	81.0	81.3	87.5	75.5	63.5	81.3	87.5	87.5	+24.0
Human Trafficking (USDs)	50.0	50.0	50.0	50.0	25.0	50.0	100.0	100.0	50.0	50.0	50.0	50.0	25.0	50.0	50.0	0.0
<b>NATIONAL SECURITY</b>	95.0	95.0	95.0	95.0	95.0	95.0	95.0	100.0	100.0	100.0	100.0	100.0	100.0	95.0	95.0	-5.0
Government Involvement in Armed Conflict (UCDP)	100.0	100.0	100.0	100.0	100.0	100.0	100.0	100.0	100.0	100.0	100.0	100.0	100.0	100.0	100.0	0.0
Domestic Armed Conflict (EIU)	100.0	100.0	100.0	100.0	100.0	100.0	100.0	100.0	100.0	100.0	100.0	100.0	100.0	100.0	100.0	0.0
Cross-border Tensions (EIU)	75.0	75.0	75.0	75.0	75.0	75.0	75.0	100.0	100.0	100.0	100.0	100.0	100.0	75.0	75.0	-25.0
Internally Displaced People (IDMC)	100.0	100.0	100.0	100.0	100.0	100.0	100.0	100.0	100.0	100.0	100.0	100.0	100.0	100.0	100.0	0.0
Political Refugees (UNHCR)	100.0	100.0	100.0	100.0	100.0	100.0	100.0	100.0	100.0	100.0	100.0	100.0	100.0	99.9	99.9	-0.0
<b>PARTICIPATION &amp; HUMAN RIGHTS</b>	57.2	56.2	55.6	57.1	56.7	56.6	58.2	58.2	57.2	60.0	61.7	62.5	63.6	64.4	63.0	+0.5
<b>PARTICIPATION</b>	56.9	53.6	53.6	56.9	53.6	53.6	55.8	57.3	54.4	58.5	61.7	64.2	64.2	64.2	62.8	-1.4
Political Rights (FH)	66.7	50.0	50.0	66.7	50.0	50.0	50.0	50.0	50.0	66.7	66.7	66.7	66.7	66.7	66.7	0.0
Political Participation (EIU)	49.9	49.9	49.9	49.9	49.9	49.9	49.9	46.3	42.7	53.4	64.1	71.2	71.2	71.2	64.1	-7.1
Free & Fair Elections (BS)	66.7	66.7	66.7	66.7	66.7	66.7	61.1	55.6	55.6	55.6	55.6	55.6	55.6	55.6	55.6	0.0
Free & Fair Executive Elections (IREEP)	45.8	45.8	45.8	45.8	45.8	45.8	45.8	45.8	45.8	50.0	50.0	50.0	50.0	50.0	50.0	0.0
Effective Power to Govern (BS)	55.6	55.6	55.6	55.6	55.6	55.6	72.2	88.9	77.8	66.7	72.2	77.8	77.8	77.8	77.8	0.0
<b>RIGHTS</b>	55.7	55.6	53.7	54.0	54.9	54.8	56.5	54.7	54.3	56.1	56.3	55.1	58.0	60.5	60.1	+5.0
Freedom of Expression (BS/FH/GI/RSF)	58.0	57.4	56.4	58.0	57.4	57.0	57.7	57.0	58.1	59.5	58.4	55.5	59.1	66.1	70.5	+15.0
Freedom of Association & Assembly (BS/GI)	64.6	64.6	64.6	64.6	64.6	64.6	67.4	70.1	67.4	64.6	61.8	59.0	64.6	70.1	63.9	+4.9
Civil Liberties (BS/FH)	70.8	70.8	62.5	62.5	62.5	62.5	67.7	56.3	56.3	56.3	56.3	56.3	56.3	56.3	56.3	0.0
International Human Rights Conventions (OHCHR/UNOLA)	35.0	35.0	35.0	35.0	40.0	40.0	40.0	40.0	40.0	50.0	55.0	55.0	60.0	60.0	60.0	+5.0
Human Rights (EIU)	50.0	50.0	50.0	50.0	50.0	50.0	50.0	50.0	50.0	50.0	50.0	50.0	50.0	50.0	50.0	0.0
<b>GENDER</b>	59.1	59.4	59.5	60.3	61.5	61.5	62.4	62.5	62.8	65.3	67.2	68.1	68.6	68.5	66.1	-2.0
Gender Equality (AfDB/WB)	56.3	56.3	56.3	56.3	56.3	56.3	56.3	56.3	56.3	56.3	56.3	50.0	54.2	54.2	54.2	+4.2
Gender Balance in Education (WB)	69.7	70.8	71.0	75.8	80.5	80.5	82.6	82.2	81.4	82.5	84.7	85.4	84.5	84.3	84.3	-1.1
Women's Participation in the Labour Force (WB)	84.9	85.6	86.1	86.6	87.1	87.5	91.2	93.0	95.8	95.4	95.2	94.9	94.7	94.5	94.5	-0.4
Gender Equality in the Workplace (GI)	33.3	33.3	33.3	33.3	33.3	33.3	33.3	33.3	33.3	33.3	33.3	33.3	33.3	33.3	33.3	0.0
Legislation on Violence against Women (OECD)	25.0	25.0	25.0	25.0	25.0	25.0	25.0	25.0	25.0	36.1	47.2	58.3	58.3	58.3	58.3	0.0
Women in Politics (GI/IPU)	44.8	44.8	44.8	44.8	48.5	48.2	48.2	47.7	47.7	53.8	53.8	55.0	55.0	55.0	38.1	-16.9
Women in the Judiciary (GI)	100.0	100.0	100.0	100.0	100.0	100.0	100.0	100.0	100.0	100.0	100.0	100.0	100.0	100.0	100.0	0.0
<b>SUSTAINABLE ECONOMIC OPPORTUNITY</b>	41.5	42.5	42.2	42.4	42.6	42.3	43.4	46.2	47.4	48.0	49.7	48.6	47.1	47.5	45.6	-3.1
<b>PUBLIC MANAGEMENT</b>	39.6	43.3	42.1	42.4	43.2	42.0	45.6	50.3	50.3	49.8	51.7	50.0	47.4	50.8	47.9	-2.1
Public Administration (AfDB/WB)	66.7	66.7	66.7	66.7	66.7	66.7	66.7	72.9	72.9	72.9	72.9	64.6	64.6	67.7	56.3	-8.3
Statistical Capacity (WB)	68.7	68.7	68.7	68.7	68.7	64.2	68.7	79.1	76.1	76.1	83.6	82.1	77.6	83.6	79.1	-3.0



Score/100; 100 = best

	2000	2001	2002	2003	2004	2005	2006	2007	2008	2009	2010	2011	2012	2013	2014	Change 2011- 2014
Diversification (AfDB/OECD/UNDP)	1.6	2.2	1.7	2.5	3.2	2.2	2.3	3.3	3.1	1.7	2.3	3.7	2.8	2.5	2.5	-1.2
Budget Management (AfDB/WB)	47.2	47.2	47.2	47.2	47.2	41.7	41.7	47.2	52.8	52.8	52.8	52.8	58.3	50.0	55.6	+2.8
Ratio of Total Revenue to Total Expenditure (AfDB/AU/UNECA)	39.5	37.2	33.9	28.6	40.0	45.3	51.4	49.4	45.0	38.4	43.7	39.4	26.9	51.9	38.3	-1.1
Fiscal Policy (AfDB/WB)	50.8	50.8	50.8	50.8	50.8	50.8	56.3	63.5	63.5	63.5	63.5	57.9	50.8	61.9	61.9	+4.0
Ratio of External Debt Service to Exports (EIU)	39.5	73.3	70.5	76.8	70.5	58.3	75.6	89.7	91.6	92.3	95.6	96.5	94.5	90.7	85.3	-11.2
Revenue Mobilisation (AfDB/WB/ICTD)	42.2	43.6	39.1	40.3	41.4	49.2	48.0	47.8	48.0	50.4	50.9	52.9	51.3	49.3	52.3	-0.7
Access to Financial Records of State-owned Companies (GI)	0.0	0.0	0.0	0.0	0.0	0.0	0.0	0.0	0.0	0.0	0.0	0.0	0.0	0.0	0.0	0.0
<b>BUSINESS ENVIRONMENT</b>	<b>45.3</b>	<b>45.3</b>	<b>45.3</b>	<b>45.3</b>	<b>45.3</b>	<b>44.9</b>	<b>45.3</b>	<b>52.9</b>	<b>53.1</b>	<b>54.2</b>	<b>54.1</b>	<b>52.1</b>	<b>48.8</b>	<b>47.1</b>	<b>46.6</b>	<b>-5.5</b>
Competitive Environment (AfDB/WB/BS/GI)	47.1	47.1	47.1	47.1	47.1	45.0	47.2	51.5	52.6	53.8	50.0	49.0	47.6	46.3	33.1	-16.0
Customs Procedures (WEF)	43.0	43.0	43.0	43.0	43.0	43.0	43.0	43.0	43.0	49.6	55.0	52.1	38.6	40.6	52.8	+0.7
Investment Climate (HER)	55.6	55.6	55.6	55.6	55.6	55.6	55.6	55.6	55.6	55.6	55.6	55.6	55.6	55.6	61.1	+5.6
Bureaucracy & Red Tape (EIU)	0.0	0.0	0.0	0.0	0.0	0.0	0.0	33.3	33.3	33.3	33.3	33.3	33.3	33.3	33.3	0.0
Soundness of Banks (WEF)	80.9	80.9	80.9	80.9	80.9	80.9	80.9	80.9	80.9	80.9	78.6	76.8	70.5	69.1	59.9	-17.6
<b>INFRASTRUCTURE</b>	<b>25.7</b>	<b>25.9</b>	<b>26.2</b>	<b>26.3</b>	<b>26.5</b>	<b>26.7</b>	<b>27.2</b>	<b>27.7</b>	<b>28.1</b>	<b>30.5</b>	<b>34.1</b>	<b>35.3</b>	<b>36.3</b>	<b>36.2</b>	<b>36.3</b>	<b>+1.0</b>
Road Network (WEF)	26.2	26.2	26.2	26.2	26.2	26.2	26.2	26.2	26.2	38.7	51.1	51.4	46.1	44.0	43.6	-7.8
Rail Network (EIU)	25.0	25.0	25.0	25.0	25.0	25.0	25.0	25.0	25.0	25.0	25.0	25.0	25.0	25.0	25.0	0.0
Air Transport (GI/WEF)	34.5	34.5	34.5	34.5	34.5	34.5	34.5	34.5	34.5	37.0	40.4	39.5	36.9	34.6	33.0	-6.5
Access to Water (WHO/UNICEF)	28.3	29.6	30.8	32.1	33.3	34.6	35.8	37.0	38.3	39.5	40.7	42.0	42.0	42.1	42.1	+0.1
Electricity Supply (WEF)	30.8	30.8	30.8	30.8	30.8	30.8	30.8	30.8	30.8	28.4	17.0	13.4	20.9	29.6	36.3	+22.9
Telephone & IT Infrastructure (EIU)	33.3	33.3	33.3	33.3	33.3	33.3	33.3	33.3	33.3	33.3	45.8	50.0	50.0	37.5	33.3	-16.7
Digital Connectivity (ITU)	1.9	2.2	2.4	2.4	2.7	2.8	4.8	7.0	8.4	11.3	18.9	26.0	33.5	40.8	40.9	+14.9
<b>RURAL SECTOR</b>	<b>55.4</b>	<b>55.4</b>	<b>55.4</b>	<b>55.4</b>	<b>55.4</b>	<b>55.4</b>	<b>55.4</b>	<b>53.9</b>	<b>57.9</b>	<b>57.6</b>	<b>58.7</b>	<b>57.1</b>	<b>55.8</b>	<b>55.9</b>	<b>51.4</b>	<b>-5.7</b>
Public Resources for Rural Development (IFAD)	50.0	50.0	50.0	50.0	50.0	50.0	50.0	54.3	50.0	50.0	56.3	62.5	62.5	62.5	43.8	-18.8
Accountability, Transparency & Corruption in Rural Areas (IFAD)	55.2	55.2	55.2	55.2	55.2	55.2	55.2	49.9	60.5	60.5	60.5	60.5	60.5	60.5	54.5	-6.1
Land & Water for Low-income Rural Populations (IFAD)	47.8	47.8	47.8	47.8	47.8	47.8	47.8	52.7	55.0	55.0	55.0	55.0	55.0	55.0	55.0	0.0
Rural Business Climate (IFAD)	42.6	42.6	42.6	42.6	42.6	42.6	42.6	38.2	50.2	50.2	48.4	47.4	47.4	47.4	41.8	-5.6
Agricultural Research & Extension Services (IFAD)	58.1	58.1	58.1	58.1	58.1	58.1	58.1	44.1	46.4	46.4	55.9	55.9	55.9	55.9	55.9	0.0
Agricultural Policy Costs (WEF)	81.4	81.4	81.4	81.4	81.4	81.4	81.4	81.4	81.4	79.1	71.4	58.1	48.0	51.2	51.2	-7.0
Engagement with Low-income Rural Populations (IFAD)	45.9	45.9	45.9	45.9	45.9	45.9	45.9	48.2	61.8	61.8	55.9	58.8	58.8	58.8	58.8	0.0
Equal Representation in Rural Areas (IFAD)	62.5	62.5	62.5	62.5	62.5	62.5	62.5	62.5	58.3	58.3	66.8	58.3	58.3	56.3	50.0	-8.3
<b>HUMAN DEVELOPMENT</b>	<b>44.4</b>	<b>47.9</b>	<b>47.1</b>	<b>48.1</b>	<b>48.6</b>	<b>48.9</b>	<b>49.6</b>	<b>49.4</b>	<b>51.0</b>	<b>52.3</b>	<b>51.8</b>	<b>53.5</b>	<b>54.1</b>	<b>55.2</b>	<b>54.2</b>	<b>+0.7</b>
<b>WELFARE</b>	<b>45.1</b>	<b>45.1</b>	<b>45.1</b>	<b>44.7</b>	<b>44.4</b>	<b>44.9</b>	<b>46.3</b>	<b>46.7</b>	<b>49.1</b>	<b>51.7</b>	<b>52.3</b>	<b>52.1</b>	<b>51.3</b>	<b>53.2</b>	<b>53.2</b>	<b>+1.1</b>
Welfare Regime (BS)	15.4	15.4	15.4	17.9	20.5	23.1	26.9	30.8	34.6	38.5	42.3	46.2	46.2	46.2	46.2	0.0
Welfare Services (Health & Education) (AfDB/WB)	67.0	67.0	67.0	67.0	67.0	67.0	67.0	59.8	59.8	67.0	67.0	67.0	69.0	71.1	71.1	+4.2
Social Protection & Labour (AfDB/WB)	63.5	63.5	63.5	63.5	63.5	63.5	63.5	69.0	69.0	69.0	69.0	57.9	63.5	65.7	65.7	+7.8
Social Exclusion (BS)	14.3	14.3	14.3	9.5	4.8	0.0	0.0	0.0	7.1	14.3	14.3	14.3	21.4	28.6	28.6	+14.3
Equity of Public Resource Use (AfDB/WB)	67.0	67.0	67.0	67.0	67.0	67.0	73.2	73.2	79.5	79.5	79.5	73.2	64.9	67.0	67.0	-6.3
Environmental Policy (BS)	28.6	28.6	28.6	28.6	28.6	28.6	28.6	28.6	28.6	28.6	28.6	28.6	28.6	28.6	28.6	0.0
Environmental Sustainability (AfDB/WB)	59.7	59.7	59.7	59.7	59.7	65.3	65.3	65.3	65.3	65.3	65.3	77.8	65.3	65.3	65.3	-12.5
<b>EDUCATION</b>	<b>35.4</b>	<b>35.6</b>	<b>35.7</b>	<b>34.7</b>	<b>33.7</b>	<b>33.7</b>	<b>33.1</b>	<b>32.8</b>	<b>33.7</b>	<b>34.0</b>	<b>36.3</b>	<b>38.0</b>	<b>38.7</b>	<b>39.9</b>	<b>39.2</b>	<b>+1.1</b>
Education Provision & Quality (BS)	33.3	33.3	33.3	33.3	33.3	33.3	33.3	33.3	33.3	33.3	33.3	33.3	41.7	50.0	50.0	+16.7
Education System Quality (WEF)	50.8	50.8	50.8	50.8	50.8	50.8	50.8	50.8	50.8	52.9	63.8	66.9	55.8	45.4	38.9	-28.0
Ratio of Pupils to Teachers in Primary School (UNESCO)	34.4	34.4	34.4	33.3	32.1	33.3	27.7	25.2	24.9	22.3	23.9	27.5	29.8	35.4	35.4	+7.9
Literacy (UNESCO)	58.0	58.0	58.0	58.0	58.0	58.0	58.0	58.0	58.0	58.0	58.0	59.4	60.8	62.2	63.6	+4.2
Primary School Completion (WB)	47.1	47.2	49.4	44.8	40.1	39.9	39.8	40.8	45.4	47.2	49.4	52.2	55.7	56.7	56.7	+4.5
Secondary School Enrolment (UNESCO)	24.4	25.1	23.8	22.4	20.9	20.4	21.8	21.3	23.3	23.8	25.0	26.1	26.5	28.7	28.7	+2.6
Tertiary Education Enrolment (UNESCO)	0.1	0.2	0.2	0.3	0.4	0.4	0.4	0.4	0.5	0.6	0.7	0.9	0.9	0.9	0.9	0.0
<b>HEALTH</b>	<b>52.7</b>	<b>63.0</b>	<b>60.6</b>	<b>64.9</b>	<b>67.6</b>	<b>68.2</b>	<b>69.3</b>	<b>68.6</b>	<b>70.2</b>	<b>71.1</b>	<b>66.7</b>	<b>70.5</b>	<b>72.2</b>	<b>72.6</b>	<b>70.3</b>	<b>-0.1</b>
Access to Sanitation (WHO/UNICEF)	54.2	55.0	55.8	56.6	57.4	58.2	59.1	59.9	60.7	61.5	62.3	63.1	63.1	63.1	63.1	+0.0
Child Mortality (IGME)	26.4	31.6	36.8	41.9	46.7	51.0	55.0	58.8	62.5	65.8	68.5	71.2	74.1	75.3	75.3	+4.0
Maternal Mortality (WHO)	66.4	68.0	69.7	71.3	73.0	74.6	74.9	75.1	75.4	75.7	76.0	76.4	76.9	77.3	77.3	+0.9
Undernourishment (WB)	57.6	60.4	61.2	59.9	59.0	59.4	61.5	64.6	66.9	68.2	68.7	69.2	69.4	69.8	69.8	+0.5
Disease (Malaria & TB) (WHO)	73.9	74.4	62.9	69.2	76.8	70.1	64.9	61.7	60.8	58.7	63.0	70.6	76.1	76.2	76.2	+5.7
Immunisation (Measles, DPT & Hepatitis B) (WB/WHO)	68.1	76.5	62.7	80.3	85.2	88.8	94.4	84.9	89.8	92.9	93.3	97.4	94.2	88.4	88.4	-9.0
Antiretroviral Treatment (ART) Provision (UNAIDS)	0.0	.	.	.	.	.	.	.	.	.	.	26.8	40.7	48.7	55.5	+21.7
Public Health Campaigns (GI)	75.0	75.0	75.0	75.0	75.0	75.0	75.0	75.0	75.0	75.0	75.0	75.0	75.0	75.0	50.0	-25.0

# SOUTHERN AFRICA



OVERALL GOVERNANCE

58.9

2014 SCORE/100  
2014 RANK/12; 1=BEST



SAFETY & RULE OF LAW

63.4



PARTICIPATION  
& HUMAN RIGHTS

59.2



SUSTAINABLE ECONOMIC  
OPPORTUNITY

51.5



HUMAN DEVELOPMENT

61.6

## ANGOLA

	40.8	11
	43.8	11
	40.2	11
	31.6	11
	47.6	11

## BOTSWANA

	74.2	2
	82.7	2
	68.7	5
	66.1	3
	79.5	2

## LESOTHO

	61.1	5
	66.7	6
	70.9	4
	50.5	6
	56.4	7

## MADAGASCAR

	49.1	10
	57.7	9
	53.0	9
	39.3	10
	46.3	12

## MALAWI

	56.7	7
	64.0	7
	63.0	6
	45.6	8
	54.2	8

## MAURITIUS

	79.9	1
	82.7	1
	73.8	3
	77.5	1
	85.7	1

## MOZAMBIQUE

	52.3	8
	54.0	10
	59.9	7
	45.4	9
	49.8	10

## NAMIBIA

	70.4	4
	74.3	3
	76.1	1
	64.0	4
	67.1	4

## SOUTH AFRICA

	73.0	3
	68.4	4
	73.9	2
	72.3	2
	77.3	3

## SWAZILAND

	49.6	9
	59.2	8
	29.5	12
	50.3	7
	59.6	6

## ZAMBIA

	59.5	6
	66.7	5
	59.1	8
	50.7	5
	61.5	5

## ZIMBABWE

	40.4	12
	41.0	12
	41.9	10
	24.6	12
	54.2	9

The 2015 IIAG was calculated using data from 33 independent institutions.

African Development Bank (AfDB)  
 African Union Commission (AUC)  
 Armed Conflict Location & Event Data Project (ACLED)  
 Bertelsmann Stiftung (BS)  
 Economist Intelligence Unit (EIU)  
 Freedom House (FH)  
 Ghana Center for Democratic Development (CDD-Ghana)  
 Global Integrity (GI)  
 Institut de Recherche Empirique en Economie Politique (IREEP)  
 Inter-agency Group for Child Mortality Estimation (IGME)  
 Internal Displacement Monitoring Centre (IDMC)  
 International Centre for Tax and Development (ICTD)  
 International Fund for Agricultural Development (IFAD)  
 International Telecommunication Union (ITU)  
 Inter-Parliamentary Union (IPU)  
 Joint United Nations Programme on HIV/AIDS (UNAIDS)  
 Office of the High Commissioner for Human Rights (OHCHR)  
 Office of the United Nations High Commissioner for Refugees (UNHCR)  
 Organisation for Economic Co-operation and Development (OECD)  
 Political Terror Scale (PTS)  
 Reporters sans frontières (RSF)  
 The Heritage Foundation (HER)  
 United Nations Children's Fund (UNICEF)  
 United Nations Department of Economic and Social Affairs (UNDESA)  
 United Nations Development Programme (UNDP)  
 United Nations Economic Commission for Africa (UNECA)  
 United Nations Educational, Scientific and Cultural Organization (UNESCO)  
 United Nations Office of Legal Affairs (UNOLA)  
 United States Department of State - Office to Monitor and Combat Trafficking in Persons (USDS)  
 Uppsala University, Department of Peace and Conflict Research - Uppsala Conflict Data Programme (UCDP)  
 World Bank (WB)  
 World Economic Forum (WEF)  
 World Health Organization (WHO)

To explore the 2015 IIAG further, including information on the IIAG methodology and data sources, download the IIAG Data Portal, Executive Summary or Sub-category Insights from [www.moibrahimfoundation.org/iiag/downloads/](http://www.moibrahimfoundation.org/iiag/downloads/).



The IIAG Data Portal is an interactive Excel-based application, available for in-depth analysis of the results of the IIAG, in English or French.

- > EXPLORE KEY FINDINGS
- > EXPLORE BY COUNTRY
- > EXPLORE BY REGION, REC OR GEOGRAPHICAL GROUPING
- > EXPLORE BY INDICATOR
- > COMPARE COUNTRIES OR GROUPS



Join the discussion on Twitter or Facebook:

 @Mo\_IbrahimFdn #IIAG
  /MolbrahimFoundation

[www.moibrahimfoundation.org](http://www.moibrahimfoundation.org)

 /MoIbrahimFoundation  @Mo\_IbrahimFdn #IIAG