



# 2015

---

Ibrahim Index of  
African Governance

---

**COUNTRY INSIGHTS**

---

**SOMALIA**



# Contents

---

What is the IIAG?	3
How does Somalia perform?	4
Data Table	8
Somalia within East Africa	10
Data Providers & IIAG Resources	11

---

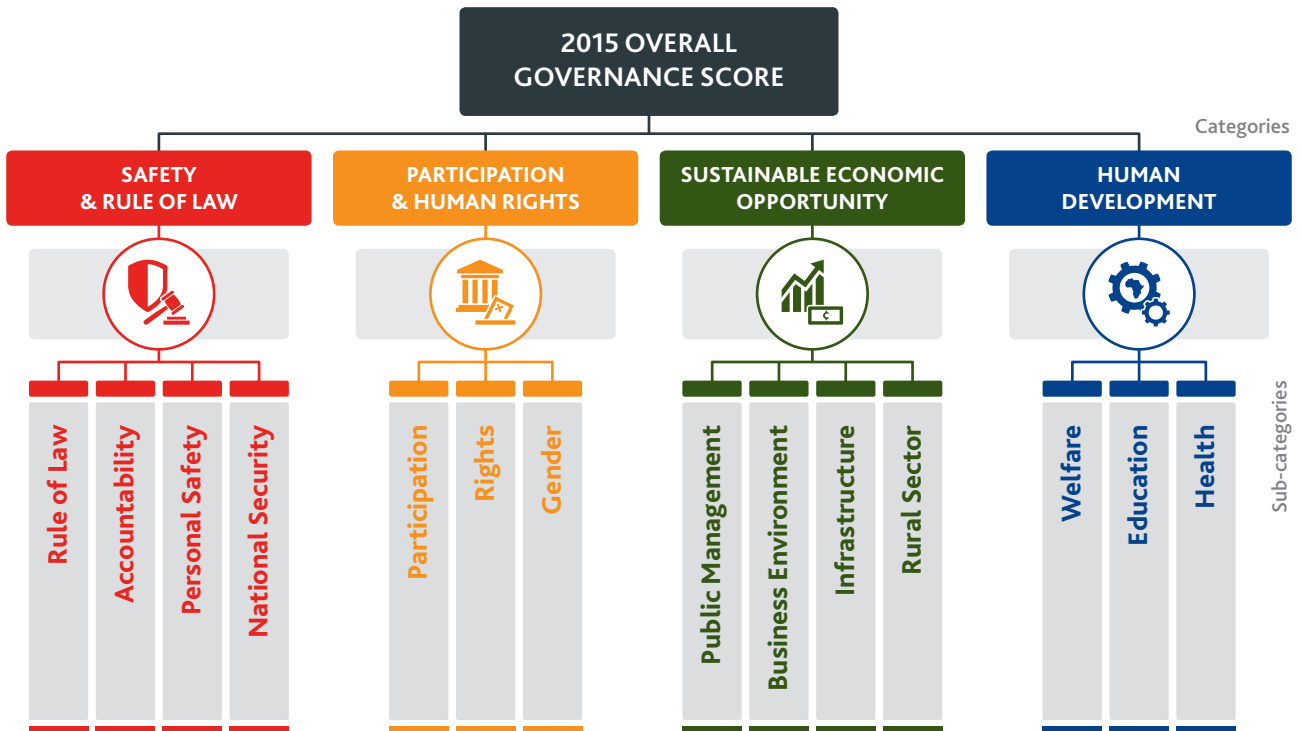
All figures have been rounded to the nearest one decimal place. This means that countries may appear to have the same score, or the change over time may appear inaccurate, but this is not the case when all decimal places are taken into account. Countries have been ranked and trends have been described on the basis of full scores not the rounded numbers that appear here.

Regional Economic Community (REC) averages are calculated by applying the REC's current membership configuration for all data years.

The Mo Ibrahim Foundation (MIF) is aware that some sources update their data sets after our documentation is sent to print. IIAG raw data are correct as per the date 'last accessed', which is stated for each indicator within the Data Portal ([www.moibrahimfoundation.org/iiag/downloads/](http://www.moibrahimfoundation.org/iiag/downloads/)).

South Sudan and Sudan are excluded from all group averages pre-2011 as neither country existed in their current configurations before the secession of South Sudan in 2011.

---



The Ibrahim Index of African Governance (IIAG) measures the quality of governance in every African country on an annual basis. It does this by compiling data from diverse global sources to build an accurate and detailed picture of governance performance in African countries.

The broad aim of the IIAG is to better inform and sustain the debate on African governance by providing a transparent and user-friendly resource to:

- support citizens, governments, institutions and the private sector to accurately assess the delivery of public goods and services, and policy outcomes.

- encourage data-driven narratives on governance issues.
- help determine, debate and strengthen government performance.

The IIAG was created in 2007 in recognition of the need for a quantifiable tool to accurately measure and monitor African governance performance, its progress over time and across countries, and as a means of supporting effective and responsive solutions to complex public policy challenges in developing countries. Policies need to be evaluated by their results, which can only be done if accompanied by robust data.

### 2015 Ibrahim Index of African Governance

**1** overall governance score is:



### SOMALIA

Somalia remains the weakest performing country on the continent, despite showing progress at the overall governance level and in all categories.

Somalia achieves its highest score and largest improvement in *Human Development*, having shown year-on-year improvement driven by gains in *Welfare* and *Health*.

At the sub-category level Somalia shows its most positive developments within the categories of *Safety & Rule of Law* and *Sustainable Economic Opportunity*. In both of these categories it has succeeded in moving up from the bottom of the ranks in two sub-categories, *National Security* and *Business Environment*. Despite this, Somalia continues to slip in the other constituent sub-categories, such as *Accountability* and *Personal Safety*.

#### **Overall governance: lowest scoring country demonstrates improved performance.**

Somalia scores 8.5 (out of 100) in overall governance, ranking 54<sup>th</sup> (out of 54) in Africa.

Somalia shows overall governance improvement (+1.2) since 2011.

Somalia scores lower than the African average and lower than the regional average for East Africa.

Somalia is ranked 13<sup>th</sup> in East Africa in overall governance.

#### ***Safety & Rule of Law*: marginal improvement driven by gains in *National Security*.**

Somalia scores 5.5 in *Safety & Rule of Law*, ranking 54<sup>th</sup> on the continent.

Within the *Safety & Rule of Law* category, Somalia's best sub-category performance is in *National Security*, scoring 18.3.

Somalia's weakest sub-category performance in the *Safety & Rule of Law* category is in *Rule of Law*, scoring 0.3.

Somalia has shown an improvement (+0.6) in *Safety & Rule of Law* since 2011. This has been driven by improvement in two of the four sub-categories: *Rule of Law* (+0.3) and *National Security* (+5.0).

#### ***Participation & Human Rights*: progress in *Rights* and *Gender* balanced by negative trend in *Participation*.**

Somalia scores 10.4 in *Participation & Human Rights*, ranking 54<sup>th</sup> on the continent.

Within the *Participation & Human Rights* category, Somalia's best sub-category performance is in *Gender*, scoring 17.7.

Somalia's weakest sub-category performance in the *Participation & Human Rights* category is in *Participation*, scoring 4.1.

Somalia has shown an improvement (+0.8) in *Participation & Human Rights* since 2011. This has been driven by improvement in two of the three sub-categories: *Rights* (+1.6) and *Gender* (+2.3).

***Sustainable Economic Opportunity: encouraging improvement in Business Environment.***

Somalia scores 4.1 in *Sustainable Economic Opportunity*, ranking 54<sup>th</sup> on the continent.

Within the *Sustainable Economic Opportunity* category, Somalia's best sub-category performance is in *Infrastructure*, scoring 5.8.

Somalia's weakest sub-category performance in the *Sustainable Economic Opportunity* category is in *Public Management*, scoring 1.3.

Somalia has shown an improvement (+1.0) in *Sustainable Economic Opportunity* since 2011. This has been driven by improvement in one of the four sub-categories: *Business Environment* (+5.3).

***Human Development: Somalia's most improved category.***

Somalia scores 14.0 in *Human Development*, ranking 54<sup>th</sup> on the continent.

Within the *Human Development* category, Somalia's best sub-category performance is in *Health*, scoring 40.0.

Somalia's weakest sub-category performance in the *Human Development* category is in *Education*, scoring 0.0.

Somalia has shown an improvement (+2.4) in *Human Development* since 2011. This has been driven by improvement in two of the three sub-categories: *Welfare* (+2.1) and *Health* (+5.0).

## How does Somalia perform?

6

# SOMALIA



OVERALL  
GOVERNANCE

2014 SCORES & RANKS

SCORE/100

8.5

AFRICAN AVERAGE

50.1

CHANGE SINCE 2011

+1.2

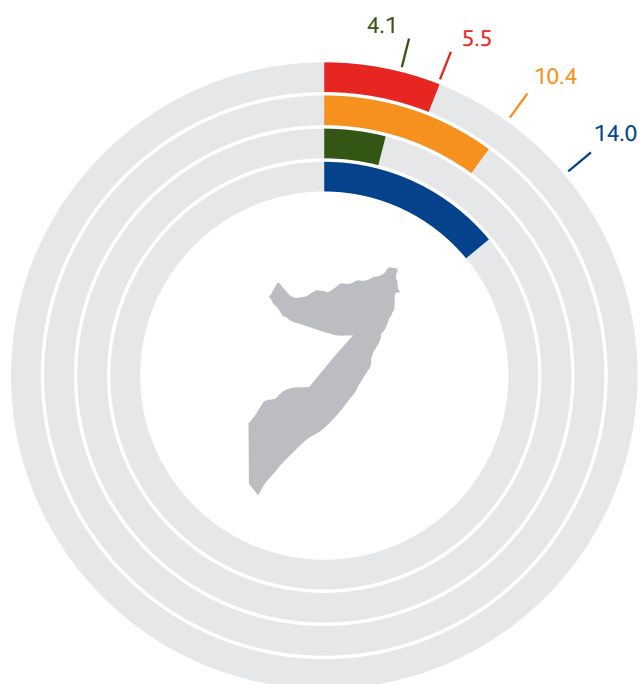
RANK/54

54

Head of State	President Hassan Sheikh Mohamoud
Date came to power	10 September 2012
Head of Government	Prime Minister Omar Abdirashid Ali Sharmarke
Date came to power	24 December 2014
Region	East Africa
REC Membership(s)	CEN-SAD, IGAD
Population (total m)	10.8
Urban population (% of total population)	39.1
African Peer Review Mechanism	Not member
African Charter on Democracy, Elections and Governance	Not signed, Not ratified
African Charter on Statistics	Not signed, Not ratified

Information correct at 23 July 2015

- Safety & Rule of Law
- Sustainable Economic Opportunity
- Participation & Human Rights
- Human Development



SAFETY &  
RULE OF LAW

SCORE/100

5.5

AFRICAN AVERAGE

51.3

CHANGE SINCE 2011

+0.6

RANK/54

54



PARTICIPATION  
& HUMAN RIGHTS

SCORE/100

10.4

AFRICAN AVERAGE

49.3

CHANGE SINCE 2011

+0.8

RANK/54

54



SUSTAINABLE  
ECONOMIC  
OPPORTUNITY

SCORE/100

4.1

AFRICAN AVERAGE

43.2

CHANGE SINCE 2011

+1.0

RANK/54

54



HUMAN  
DEVELOPMENT

SCORE/100

14.0

AFRICAN AVERAGE

56.4

CHANGE SINCE 2011

+2.4

RANK/54

54

### 2014 SUB-CATEGORY SCORES & RANKS

SAFETY & RULE OF LAW			
	SCORE/100	AFRICAN AVERAGE	RANK/54
RULE OF LAW	0.3	50.8	54
ACCOUNTABILITY	2.1	35.5	54
PERSONAL SAFETY	1.3	44.0	54
NATIONAL SECURITY	18.3	74.8	53

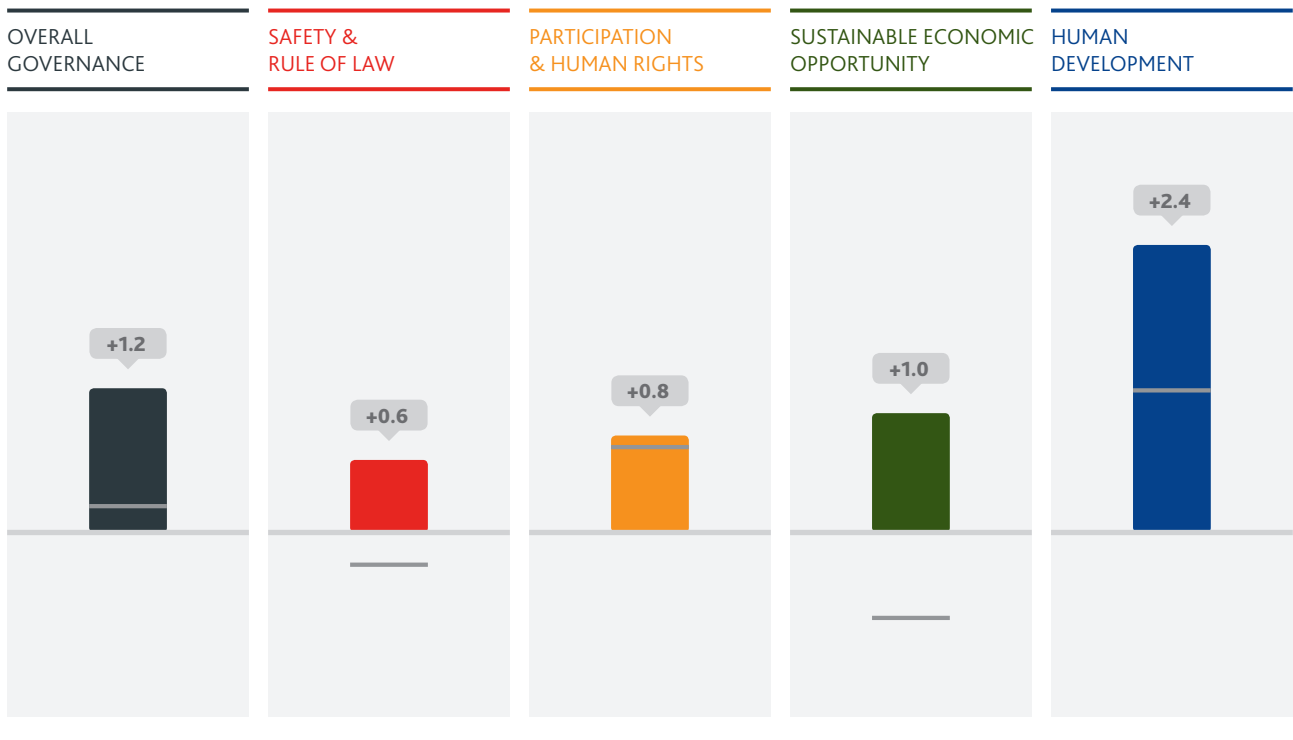
SUSTAINABLE ECONOMIC OPPORTUNITY			
	SCORE/100	AFRICAN AVERAGE	RANK/54
PUBLIC MANAGEMENT	1.3	46.0	54
BUSINESS ENVIRONMENT	5.3	40.7	53
INFRASTRUCTURE	5.8	36.5	54
RURAL SECTOR	.	50.5	.

PARTICIPATION & HUMAN RIGHTS			
	SCORE/100	AFRICAN AVERAGE	RANK/54
PARTICIPATION	4.1	45.9	54
RIGHTS	9.5	47.3	54
GENDER	17.7	54.8	54

HUMAN DEVELOPMENT			
	SCORE/100	AFRICAN AVERAGE	RANK/54
WELFARE	2.1	50.9	54
EDUCATION	0.0	48.8	53
HEALTH	40.0	69.9	54

### TRENDS SINCE 2011, OVERALL GOVERNANCE & CATEGORY LEVELS

■ 2011-2014 — African average



# Data Table

8

## SOMALIA

Score/100; 100 = best

	2000	2001	2002	2003	2004	2005	2006	2007	2008	2009	2010	2011	2012	2013	2014	Change 2011-2014
<b>OVERALL SCORE</b>	9.2	9.3	9.7	9.9	9.6	9.6	8.7	9.3	7.0	8.5	7.8	7.3	7.9	7.8	8.5	+1.2
<b>SAFETY &amp; RULE OF LAW</b>	13.5	12.1	12.3	13.5	12.8	13.1	11.0	5.2	3.9	6.4	4.7	4.9	5.8	5.8	5.5	+0.6
<b>RULE OF LAW</b>	0.0	0.0	0.0	0.0	0.0	0.0	0.6	1.1	0.6	0.0	0.0	0.0	0.3	0.0	0.3	+0.3
Property Rights (AfDB/WB/BS/HER/WEF)	0.0	0.0	0.0	0.0	0.0	0.0	2.8	5.6	2.8	0.0	0.0	0.0	1.6	0.0	1.6	+1.6
Judicial Process (EIU/GI)	0.0	0.0	0.0	0.0	0.0	0.0	0.0	0.0	0.0	0.0	0.0	0.0	0.0	0.0	0.0	0.0
Judicial Independence (BS/GI/WEF)	0.0	0.0	0.0	0.0	0.0	0.0	0.0	0.0	0.0	0.0	0.0	0.0	0.0	0.0	0.0	0.0
Sanctions (CDD)	0.0	0.0	0.0	0.0	0.0	0.0	0.0	0.0	0.0	0.0	0.0	0.0	0.0	0.0	0.0	0.0
Transfers of Power (EIU)	0.0	0.0	0.0	0.0	0.0	0.0	0.0	0.0	0.0	0.0	0.0	0.0	0.0	0.0	0.0	0.0
<b>ACCOUNTABILITY</b>	5.2	6.0	6.9	5.2	4.4	4.3	4.3	1.8	1.8	1.8	1.8	3.4	5.6	3.6	2.1	-1.4
Accountability, Transparency & Corruption in the Public Sector (AfDB/WB)	0.0	0.0	0.0	0.0	0.0	0.0	0.0	0.0	0.0	0.0	0.0	0.0	4.2	0.0	0.0	0.0
Access to Information (GI)	0.0	0.0	0.0	0.0	0.0	0.0	0.0	0.0	0.0	0.0	0.0	0.0	0.0	0.0	0.0	0.0
Online Services (UNDESA)	6.9	6.9	6.9	6.9	0.0	0.0	0.0	0.0	0.0	0.0	0.0	13.2	26.4	14.3	2.3	-10.9
Corruption & Bureaucracy (WB)	14.3	21.4	28.6	14.3	14.9	14.3	14.3	14.3	14.3	14.3	14.3	14.3	14.3	14.3	14.3	0.0
Corruption in Government & Public Officials (EIU)	20.0	20.0	20.0	20.0	20.0	20.0	20.0	0.0	0.0	0.0	0.0	0.0	0.0	0.0	0.0	0.0
Diversion of Public Funds (WEF)	.	.	.	.	.	.	.	.	.	.	.	.	.	.	.	.
Accountability of Public Officials (EIU)	0.0	0.0	0.0	0.0	0.0	0.0	0.0	0.0	0.0	0.0	0.0	0.0	0.0	0.0	0.0	0.0
Public Sector Corruption Investigation (GI)	0.0	0.0	0.0	0.0	0.0	0.0	0.0	0.0	0.0	0.0	0.0	0.0	0.0	0.0	0.0	0.0
Prosecution of Abuse of Office (BS)	0.0	0.0	0.0	0.0	0.0	0.0	0.0	0.0	0.0	0.0	0.0	0.0	0.0	0.0	0.0	0.0
<b>PERSONAL SAFETY</b>	27.5	27.4	27.3	27.2	27.0	27.3	25.9	4.5	0.0	10.3	3.7	2.6	1.3	1.3	1.3	-1.4
Safety of the Person (EIU)	50.0	50.0	50.0	50.0	50.0	50.0	50.0	0.0	0.0	0.0	0.0	0.0	0.0	0.0	0.0	0.0
Police Services (GI/WEF)	0.0	0.0	0.0	0.0	0.0	0.0	0.0	0.0	0.0	0.0	0.0	0.0	0.0	0.0	0.0	0.0
Social Unrest (EIU)	0.0	0.0	0.0	0.0	0.0	0.0	0.0	0.0	0.0	0.0	0.0	0.0	0.0	0.0	0.0	0.0
Violent Crime (EIU)	25.0	25.0	25.0	25.0	25.0	25.0	25.0	0.0	0.0	0.0	0.0	0.0	0.0	0.0	0.0	0.0
Political Violence (ACLEDD/PTS)	62.5	61.9	61.3	60.8	60.2	61.3	54.4	22.4	0.0	51.6	18.3	13.2	6.3	6.3	6.3	-6.9
Human Trafficking (USDS)	.	.	.	.	.	.	.	.	.	.	.	.	.	.	.	.
<b>NATIONAL SECURITY</b>	21.5	14.9	14.9	21.5	20.0	20.7	13.3	13.3	13.3	13.3	13.3	13.3	15.8	18.3	18.3	+5.0
Government Involvement in Armed Conflict (UCDP)	100.0	66.7	66.7	100.0	100.0	100.0	66.7	66.7	66.7	66.7	66.7	66.7	66.7	66.7	66.7	0.0
Domestic Armed Conflict (EIU)	0.0	0.0	0.0	0.0	0.0	0.0	0.0	0.0	0.0	0.0	0.0	0.0	0.0	0.0	0.0	0.0
Cross-border Tensions (EIU)	0.0	0.0	0.0	0.0	0.0	0.0	0.0	0.0	0.0	0.0	0.0	0.0	12.5	25.0	25.0	+25.0
Internally Displaced People (IDMC)	7.6	7.6	7.6	7.6	0.0	3.5	0.0	0.0	0.0	0.0	0.0	0.0	0.0	0.0	0.0	0.0
Political Refugees (UNHCR)	0.0	0.0	0.0	0.0	0.0	0.0	0.0	0.0	0.0	0.0	0.0	0.0	0.0	0.0	0.0	0.0
<b>PARTICIPATION &amp; HUMAN RIGHTS</b>	11.0	10.9	11.1	11.1	11.1	11.1	9.7	8.8	9.4	9.5	9.8	9.6	10.0	9.2	10.4	+0.8
<b>PARTICIPATION</b>	6.2	6.2	6.2	6.2	6.2	6.2	2.8	2.8	2.8	4.3	5.7	5.6	5.6	2.8	4.1	-1.5
Political Rights (FH)	16.7	16.7	16.7	16.7	16.7	16.7	0.0	0.0	0.0	0.0	0.0	0.0	0.0	0.0	0.0	0.0
Political Participation (EIU)	14.2	14.2	14.2	14.2	14.2	14.2	14.2	14.2	14.2	21.4	28.5	28.2	28.2	14.1	20.5	-7.7
Free & Fair Elections (BS)	0.0	0.0	0.0	0.0	0.0	0.0	0.0	0.0	0.0	0.0	0.0	0.0	0.0	0.0	0.0	0.0
Free & Fair Executive Elections (IREEP)	0.0	0.0	0.0	0.0	0.0	0.0	0.0	0.0	0.0	0.0	0.0	0.0	0.0	0.0	0.0	0.0
Effective Power to Govern (BS)	0.0	0.0	0.0	0.0	0.0	0.0	0.0	0.0	0.0	0.0	0.0	0.0	0.0	0.0	0.0	0.0
<b>RIGHTS</b>	10.0	9.9	10.4	10.4	10.2	10.2	9.5	9.0	8.5	7.9	7.9	7.9	8.2	8.6	9.5	+1.6
Freedom of Expression (BS/FH/GI/RSF)	18.9	18.2	20.8	20.8	19.8	19.8	19.2	19.5	16.7	13.9	13.9	13.9	15.3	17.5	15.6	+1.7
Freedom of Association & Assembly (BS/GI)	11.1	11.1	11.1	11.1	11.1	11.1	8.3	5.6	5.6	5.6	5.6	5.6	5.6	5.6	11.8	+6.3
Civil Liberties (BS/FH)	0.0	0.0	0.0	0.0	0.0	0.0	0.0	0.0	0.0	0.0	0.0	0.0	0.0	0.0	0.0	0.0
International Human Rights Conventions (OHCHR/UNOLA)	20.0	20.0	20.0	20.0	20.0	20.0	20.0	20.0	20.0	20.0	20.0	20.0	20.0	20.0	20.0	0.0
Human Rights (EIU)	0.0	0.0	0.0	0.0	0.0	0.0	0.0	0.0	0.0	0.0	0.0	0.0	0.0	0.0	0.0	0.0
<b>GENDER</b>	16.7	16.7	16.7	16.8	16.8	16.8	16.8	14.5	16.9	16.3	15.8	15.4	16.3	16.3	17.7	+2.3
Gender Equality (AfDB/WB)	0.0	0.0	0.0	0.0	0.0	0.0	0.0	0.0	0.0	0.0	0.0	0.0	4.2	8.3	8.3	+8.3
Gender Balance in Education (WB)	.	.	.	.	.	.	.	0.0	.	.	.	.	.	.	.	.
Women's Participation in the Labour Force (WB)	31.5	31.6	31.7	31.9	32.0	32.1	32.2	32.4	32.4	32.5	32.6	32.8	32.9	32.9	32.9	+0.1
Gender Equality in the Workplace (GI)	0.0	0.0	0.0	0.0	0.0	0.0	0.0	0.0	0.0	0.0	0.0	0.0	0.0	0.0	33.3	+33.3
Legislation on Violence against Women (OECD)	25.0	25.0	25.0	25.0	25.0	25.0	25.0	25.0	25.0	22.2	19.4	16.7	12.5	8.3	8.3	-8.3
Women in Politics (GI/IPU)	43.8	43.8	43.8	43.8	43.8	43.8	43.6	43.9	43.9	42.9	42.8	42.8	48.3	48.3	23.3	-19.5
Women in the Judiciary (GI)	0.0	0.0	0.0	0.0	0.0	0.0	0.0	0.0	0.0	0.0	0.0	0.0	0.0	0.0	0.0	0.0
<b>SUSTAINABLE ECONOMIC OPPORTUNITY</b>	1.3	1.9	1.8	2.1	2.2	2.3	2.4	2.8	2.5	4.0	4.0	3.1	3.7	3.5	4.1	+1.0
<b>PUBLIC MANAGEMENT</b>	1.4	2.8	2.2	2.8	2.4	2.3	2.7	3.9	3.0	2.2	2.5	2.0	3.0	2.1	1.3	-0.7
Public Administration (AfDB/WB)	0.0	0.0	0.0	0.0	0.0	0.0	0.0	0.0	0.0	0.0	0.0	0.0	3.1	0.0	0.0	0.0
Statistical Capacity (WB)	7.5	7.5	7.5	7.5	7.5	7.5	9.0	13.4	9.0	10.4	13.4	9.0	13.4	10.4	4.5	-4.5



Score/100; 100 = best

	2000	2001	2002	2003	2004	2005	2006	2007	2008	2009	2010	2011	2012	2013	2014	Change 2011- 2014
Diversification (AfDB/OECD/UNDP)	2.4	12.1	7.9	11.9	9.0	8.7	9.7	14.2	12.2	4.7	4.2	4.9	4.3	4.3	4.3	-0.6
Budget Management (AfDB/WB)	0.0	0.0	0.0	0.0	0.0	0.0	0.0	0.0	0.0	0.0	0.0	0.0	0.0	0.0	0.0	0.0
Ratio of Total Revenue to Total Expenditure (AfDB/AU/UNECA)	-	-	-	-	-	-	-	-	-	-	-	-	-	-	-	-
Fiscal Policy (AfDB/WB)	0.0	0.0	0.0	0.0	0.0	0.0	0.0	0.0	0.0	0.0	0.0	0.0	0.0	0.0	0.0	0.0
Ratio of External Debt Service to Exports (EIU)	-	-	-	-	-	-	-	-	-	-	-	-	-	-	-	-
Revenue Mobilisation (AfDB/WB/ICTD)	0.0	0.0	0.0	0.0	0.0	0.0	0.0	0.0	0.0	0.0	0.0	0.0	0.0	0.0	0.0	0.0
Access to Financial Records of State-owned Companies (GI)	0.0	0.0	0.0	0.0	0.0	0.0	0.0	0.0	0.0	0.0	0.0	0.0	0.0	0.0	0.0	0.0
<b>BUSINESS ENVIRONMENT</b>	<b>2.2</b>	<b>2.2</b>	<b>2.2</b>	<b>2.2</b>	<b>2.2</b>	<b>2.2</b>	<b>1.7</b>	<b>1.1</b>	<b>1.1</b>	<b>3.2</b>	<b>2.6</b>	<b>0.0</b>	<b>0.6</b>	<b>1.1</b>	<b>5.3</b>	<b>+5.3</b>
Competitive Environment (AfDB/WB/BS/GI)	4.4	4.4	4.4	4.4	4.4	4.4	3.3	2.2	2.2	6.4	5.3	0.0	1.1	2.2	10.6	+10.6
Customs Procedures (WEF)	-	-	-	-	-	-	-	-	-	-	-	-	-	-	-	-
Investment Climate (HER)	-	-	-	-	-	-	-	-	-	-	-	-	-	-	-	-
Bureaucracy & Red Tape (EIU)	0.0	0.0	0.0	0.0	0.0	0.0	0.0	0.0	0.0	0.0	0.0	0.0	0.0	0.0	0.0	0.0
Soundness of Banks (WEF)	-	-	-	-	-	-	-	-	-	-	-	-	-	-	-	-
<b>INFRASTRUCTURE</b>	<b>0.3</b>	<b>0.6</b>	<b>1.0</b>	<b>1.4</b>	<b>2.1</b>	<b>2.5</b>	<b>2.9</b>	<b>3.3</b>	<b>3.4</b>	<b>6.7</b>	<b>6.8</b>	<b>7.4</b>	<b>7.7</b>	<b>7.3</b>	<b>5.8</b>	<b>-1.6</b>
Road Network (WEF)	-	-	-	-	-	-	-	-	-	-	-	-	-	-	-	-
Rail Network (EIU)	0.0	0.0	0.0	0.0	0.0	0.0	0.0	0.0	0.0	0.0	0.0	0.0	0.0	0.0	0.0	0.0
Air Transport (GI/WEF)	0.0	0.0	0.0	0.0	0.0	0.0	0.0	0.0	0.0	0.0	0.0	0.0	0.0	0.0	0.0	0.0
Access to Water (WHO/UNICEF)	1.3	2.9	4.6	6.3	8.1	9.9	11.8	13.8	14.1	14.3	14.6	14.9	15.2	15.5	15.9	+0.9
Electricity Supply (WEF)	-	-	-	-	-	-	-	-	-	-	-	-	-	-	-	-
Telephone & IT Infrastructure (EIU)	0.0	0.0	0.0	0.0	0.0	0.0	0.0	0.0	0.0	16.7	16.7	16.7	16.7	8.3	0.0	-16.7
Digital Connectivity (ITU)	0.3	0.4	0.4	0.8	2.6	2.5	2.6	2.7	2.7	2.7	2.7	5.4	6.4	12.6	13.0	+7.6
<b>RURAL SECTOR</b>	<b>-</b>	<b>-</b>	<b>-</b>	<b>-</b>	<b>-</b>	<b>-</b>	<b>-</b>	<b>-</b>	<b>-</b>	<b>-</b>	<b>-</b>	<b>-</b>	<b>-</b>	<b>-</b>	<b>-</b>	<b>-</b>
Public Resources for Rural Development (IFAD)	-	-	-	-	-	-	-	-	-	-	-	-	-	-	-	-
Accountability, Transparency & Corruption in Rural Areas (IFAD)	-	-	-	-	-	-	-	-	-	-	-	-	-	-	-	-
Land & Water for Low-income Rural Populations (IFAD)	-	-	-	-	-	-	-	-	-	-	-	-	-	-	-	-
Rural Business Climate (IFAD)	-	-	-	-	-	-	-	-	-	-	-	-	-	-	-	-
Agricultural Research & Extension Services (IFAD)	-	-	-	-	-	-	-	-	-	-	-	-	-	-	-	-
Agricultural Policy Costs (WEF)	-	-	-	-	-	-	-	-	-	-	-	-	-	-	-	-
Engagement with Low-income Rural Populations (IFAD)	-	-	-	-	-	-	-	-	-	-	-	-	-	-	-	-
Equal Representation in Rural Areas (IFAD)	-	-	-	-	-	-	-	-	-	-	-	-	-	-	-	-
<b>HUMAN DEVELOPMENT</b>	<b>10.8</b>	<b>12.4</b>	<b>13.5</b>	<b>13.0</b>	<b>12.3</b>	<b>11.9</b>	<b>11.8</b>	<b>20.6</b>	<b>12.2</b>	<b>14.1</b>	<b>12.7</b>	<b>11.7</b>	<b>12.2</b>	<b>12.6</b>	<b>14.0</b>	<b>+2.4</b>
<b>WELFARE</b>	<b>4.2</b>	<b>4.2</b>	<b>4.2</b>	<b>2.8</b>	<b>1.4</b>	<b>0.0</b>	<b>0.0</b>	<b>0.0</b>	<b>0.0</b>	<b>3.4</b>	<b>3.4</b>	<b>0.0</b>	<b>0.9</b>	<b>2.1</b>	<b>2.1</b>	<b>+2.1</b>
Welfare Regime (BS)	15.4	15.4	15.4	10.3	5.1	0.0	0.0	0.0	0.0	0.0	0.0	0.0	0.0	0.0	0.0	0.0
Welfare Services (Health & Education) (AfDB/WB)	0.0	0.0	0.0	0.0	0.0	0.0	0.0	0.0	0.0	12.5	12.5	0.0	4.2	8.3	8.3	+8.3
Social Protection & Labour (AfDB/WB)	0.0	0.0	0.0	0.0	0.0	0.0	0.0	0.0	0.0	0.0	0.0	0.0	2.2	2.2	2.2	+2.2
Social Exclusion (BS)	14.3	14.3	14.3	9.5	4.8	0.0	0.0	0.0	0.0	0.0	0.0	0.0	0.0	0.0	0.0	0.0
Equity of Public Resource Use (AfDB/WB)	0.0	0.0	0.0	0.0	0.0	0.0	0.0	0.0	0.0	0.0	0.0	0.0	0.0	4.2	4.2	+4.2
Environmental Policy (BS)	0.0	0.0	0.0	0.0	0.0	0.0	0.0	0.0	0.0	0.0	0.0	0.0	0.0	0.0	0.0	0.0
Environmental Sustainability (AfDB/WB)	0.0	0.0	0.0	0.0	0.0	0.0	0.0	0.0	0.0	11.1	11.1	0.0	0.0	0.0	0.0	0.0
<b>EDUCATION</b>	<b>0.0</b>	<b>0.0</b>	<b>0.0</b>	<b>0.0</b>	<b>0.0</b>	<b>0.0</b>	<b>0.0</b>	<b>25.0</b>	<b>0.0</b>	<b>0.0</b>	<b>0.0</b>	<b>0.0</b>	<b>0.0</b>	<b>0.0</b>	<b>0.0</b>	<b>0.0</b>
Education Provision & Quality (BS)	0.0	0.0	0.0	0.0	0.0	0.0	0.0	0.0	0.0	0.0	0.0	0.0	0.0	0.0	0.0	0.0
Education System Quality (WEF)	-	-	-	-	-	-	-	-	-	-	-	-	-	-	-	-
Ratio of Pupils to Teachers in Primary School (UNESCO)	-	-	-	-	-	-	-	73.7	-	-	-	-	-	-	-	-
Literacy (UNESCO)	-	-	-	-	-	-	-	-	-	-	-	-	-	-	-	-
Primary School Completion (WB)	-	-	-	-	-	-	-	-	-	-	-	-	-	-	-	-
Secondary School Enrolment (UNESCO)	-	-	-	-	-	-	-	1.2	-	-	-	-	-	-	-	-
Tertiary Education Enrolment (UNESCO)	-	-	-	-	-	-	-	-	-	-	-	-	-	-	-	-
<b>HEALTH</b>	<b>28.3</b>	<b>32.9</b>	<b>36.4</b>	<b>36.1</b>	<b>35.5</b>	<b>35.8</b>	<b>35.3</b>	<b>36.9</b>	<b>36.5</b>	<b>38.9</b>	<b>34.7</b>	<b>35.0</b>	<b>35.8</b>	<b>35.8</b>	<b>40.0</b>	<b>+5.0</b>
Access to Sanitation (WHO/UNICEF)	27.6	27.5	27.4	27.4	27.4	27.4	27.4	27.4	27.7	28.0	28.4	28.7	29.0	29.3	29.7	+1.0
Child Mortality (IGME)	26.6	26.6	26.6	26.6	26.6	26.6	26.9	27.7	29.3	31.2	33.4	35.3	37.5	39.5	39.5	+4.2
Maternal Mortality (WHO)	45.8	46.7	47.6	48.5	49.4	50.3	51.9	53.5	55.0	56.6	58.1	59.3	60.6	61.8	61.8	+2.4
Undernourishment (WB)	-	-	-	-	-	-	-	-	-	-	-	-	-	-	-	-
Disease (Malaria & TB) (WHO)	77.4	78.7	79.8	80.5	81.1	82.1	82.1	81.9	81.6	81.1	81.1	80.9	80.6	80.6	80.6	-0.3
Immunisation (Measles, DPT & Hepatitis B) (WB/WHO)	20.4	18.0	36.7	33.7	28.5	28.1	23.4	30.7	25.4	36.6	39.9	37.9	38.4	34.6	38.4	+0.5
Antiretroviral Treatment (ART) Provision (UNAIDS)	0.0	-	-	-	-	-	-	-	-	-	2.0	2.7	4.3	4.8	5.0	+2.3
Public Health Campaigns (GI)	0.0	0.0	0.0	0.0	0.0	0.0	0.0	0.0	0.0	0.0	0.0	0.0	0.0	0.0	25.0	+25.0

## Somalia within East Africa

10

# EAST AFRICA

2014 SCORE/100  
2014 RANK/13; 1=BEST



OVERALL GOVERNANCE

44.3



SAFETY & RULE OF LAW

43.9



PARTICIPATION  
& HUMAN RIGHTS

41.8



SUSTAINABLE ECONOMIC  
OPPORTUNITY

38.5



HUMAN DEVELOPMENT

53.1

### BURUNDI

	45.8	9
	39.8	9
	50.3	6
	35.4	8
	57.7	6

### COMOROS

	48.5	7
	56.2	4
	51.3	5
	27.4	10
	58.9	5

### DJIBOUTI

	45.9	8
	52.4	8
	35.7	8
	42.3	7
	53.3	9

### ERITREA

	29.9	10
	30.6	10
	22.1	11
	20.3	11
	46.5	10

### ETHIOPIA

	48.6	6
	55.1	5
	35.7	9
	46.9	6
	56.7	8

### KENYA

	58.8	3
	53.8	6
	63.3	3
	54.9	3
	63.0	3

### RWANDA

	60.7	2
	62.0	2
	46.3	7
	63.5	2
	71.0	2

### SEYCHELLES

	70.3	1
	71.1	1
	63.7	2
	64.1	1
	82.4	1

### SOMALIA

	8.5	13
	5.5	13
	10.4	13
	4.1	13
	14.0	13

### SOUTH SUDAN

	19.9	12
	14.9	12
	20.6	12
	13.5	12
	30.5	12

### SUDAN

	28.3	11
	20.1	11
	22.6	10
	31.8	9
	38.7	11

### TANZANIA

	56.7	4
	56.9	3
	64.1	1
	49.0	4
	56.8	7

### UGANDA

	54.6	5
	53.0	7
	57.2	4
	47.8	5
	60.1	4

The 2015 IIAG was calculated using data from 33 independent institutions.

African Development Bank (AfDB)  
 African Union Commission (AUC)  
 Armed Conflict Location & Event Data Project (ACLED)  
 Bertelsmann Stiftung (BS)  
 Economist Intelligence Unit (EIU)  
 Freedom House (FH)  
 Ghana Center for Democratic Development (CDD-Ghana)  
 Global Integrity (GI)  
 Institut de Recherche Empirique en Economie Politique (IREEP)  
 Inter-agency Group for Child Mortality Estimation (IGME)  
 Internal Displacement Monitoring Centre (IDMC)  
 International Centre for Tax and Development (ICTD)  
 International Fund for Agricultural Development (IFAD)  
 International Telecommunication Union (ITU)  
 Inter-Parliamentary Union (IPU)  
 Joint United Nations Programme on HIV/AIDS (UNAIDS)  
 Office of the High Commissioner for Human Rights (OHCHR)  
 Office of the United Nations High Commissioner for Refugees (UNHCR)  
 Organisation for Economic Co-operation and Development (OECD)  
 Political Terror Scale (PTS)  
 Reporters sans frontières (RSF)  
 The Heritage Foundation (HER)  
 United Nations Children's Fund (UNICEF)  
 United Nations Department of Economic and Social Affairs (UNDESA)  
 United Nations Development Programme (UNDP)  
 United Nations Economic Commission for Africa (UNECA)  
 United Nations Educational, Scientific and Cultural Organization (UNESCO)  
 United Nations Office of Legal Affairs (UNOLA)  
 United States Department of State - Office to Monitor and Combat Trafficking in Persons (USDS)  
 Uppsala University, Department of Peace and Conflict Research - Uppsala Conflict Data Programme (UCDP)  
 World Bank (WB)  
 World Economic Forum (WEF)  
 World Health Organization (WHO)

To explore the 2015 IIAG further, including information on the IIAG methodology and data sources, download the IIAG Data Portal, Executive Summary or Sub-category Insights from [www.moibrahimfoundation.org/iiag/downloads/](http://www.moibrahimfoundation.org/iiag/downloads/).



The IIAG Data Portal is an interactive Excel-based application, available for in-depth analysis of the results of the IIAG, in English or French.

- > EXPLORE KEY FINDINGS
- > EXPLORE BY COUNTRY
- > EXPLORE BY REGION, REC OR GEOGRAPHICAL GROUPING
- > EXPLORE BY INDICATOR
- > COMPARE COUNTRIES OR GROUPS



Join the discussion on Twitter or Facebook:

[@Mo\\_IbrahimFdn](https://twitter.com/Mo_IbrahimFdn) #IIAG [f /MoIbrahimFoundation](https://www.facebook.com/MoIbrahimFoundation)

[www.moibrahimfoundation.org](http://www.moibrahimfoundation.org)

 /MoIbrahimFoundation  @Mo\_IbrahimFdn #IIAG